

# IL1 $\beta$ Rabbit pAb

Catalog No.: A1112 **58 Publications**

## Basic Information

**Catalog No.**

A1112

**Observed MW**

17KDa

**Calculated MW**

30kDa

**Category**

Primary antibody

**Applications**

WB, IF

**Cross-Reactivity**

Human, Mouse, Rat

## Recommended Dilutions

|           |                |
|-----------|----------------|
| <b>WB</b> | 1:500 - 1:2000 |
| <b>IF</b> | 1:50 - 1:200   |

## Contact

 | [www.abclonal.com](http://www.abclonal.com)

## Background

The protein encoded by this gene is a member of the interleukin 1 cytokine family. This cytokine is produced by activated macrophages as a proprotein, which is proteolytically processed to its active form by caspase 1 (CASP1/ICE). This cytokine is an important mediator of the inflammatory response, and is involved in a variety of cellular activities, including cell proliferation, differentiation, and apoptosis. The induction of cyclooxygenase-2 (PTGS2/COX2) by this cytokine in the central nervous system (CNS) is found to contribute to inflammatory pain hypersensitivity. This gene and eight other interleukin 1 family genes form a cytokine gene cluster on chromosome 2.

## Immunogen Information

|                |                   |
|----------------|-------------------|
| <b>Gene ID</b> | <b>Swiss Prot</b> |
| 3553           | P01584            |

**Immunogen**

Recombinant fusion protein containing a sequence corresponding to amino acids 1-269 of human IL1 $\beta$  (NP\_000567.1).

**Synonyms**

IL-1;IL1-BETA;IL1F2;IL1 beta;IL1B

## Product Information

|               |                |                       |
|---------------|----------------|-----------------------|
| <b>Source</b> | <b>Isotype</b> | <b>Purification</b>   |
| Rabbit        | IgG            | Affinity purification |

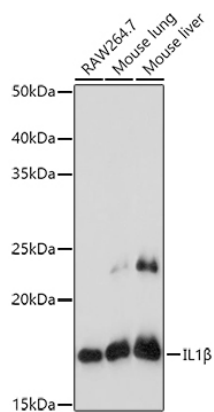
**Storage**

Store at -20°C. Avoid freeze / thaw cycles.

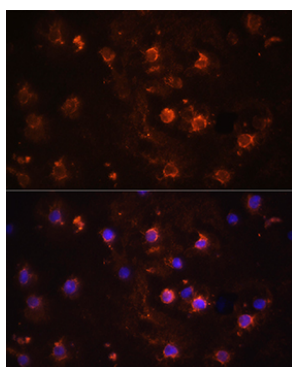
Buffer: PBS with 0.02% sodium azide,50% glycerol,pH7.3.

## Validation Data

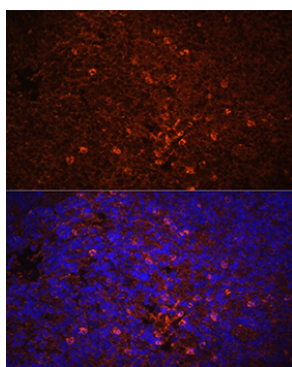
---



Western blot analysis of extracts of various cell lines, using IL1 $\beta$  antibody (A1112) at 1:1000 dilution. Secondary antibody: HRP Goat Anti-Rabbit IgG (H+L) (AS014) at 1:10000 dilution. Lysates/proteins: 25ug per lane. Blocking buffer: 3% nonfat dry milk in TBST. Detection: ECL Basic Kit (RM00020). Exposure time: 180s.



Immunofluorescence analysis of THP-1 cells using IL1 $\beta$  antibody (A1112) at dilution of 1:100. Blue: DAPI for nuclear staining.



Immunofluorescence analysis of Rat spleen using IL1 $\beta$  antibody (A1112) at dilution of 1:100. Blue: DAPI for nuclear staining.