

# IL6 Rabbit pAb

Catalog No.: A11114 **2 Publications**

## Basic Information

### Catalog No.

A11114

### Observed MW

### Calculated MW

23kDa

### Category

Primary antibody

### Applications

IHC

### Cross-Reactivity

Human, Mouse, Rat

## Background

This gene encodes a cytokine that functions in inflammation and the maturation of B cells. In addition, the encoded protein has been shown to be an endogenous pyrogen capable of inducing fever in people with autoimmune diseases or infections. The protein is primarily produced at sites of acute and chronic inflammation, where it is secreted into the serum and induces a transcriptional inflammatory response through interleukin 6 receptor, alpha. The functioning of this gene is implicated in a wide variety of inflammation-associated disease states, including susceptibility to diabetes mellitus and systemic juvenile rheumatoid arthritis. Alternative splicing results in multiple transcript variants.

## Recommended Dilutions

IHC 1:50 - 1:100

## Immunogen Information

### Gene ID

3569

### Swiss Prot

P05231

### Immunogen

Recombinant fusion protein containing a sequence corresponding to amino acids 30-212 of human IL6 (NP\_000591.1).

### Synonyms

IL6;BSF-2;BSF2;CDF;HGF;HSF;IFN-beta-2;IFNB2;IL-6

## Contact

 | [www.abclonal.com](http://www.abclonal.com)

## Product Information

### Source

Rabbit

### Isotype

IgG

### Purification

Affinity purification

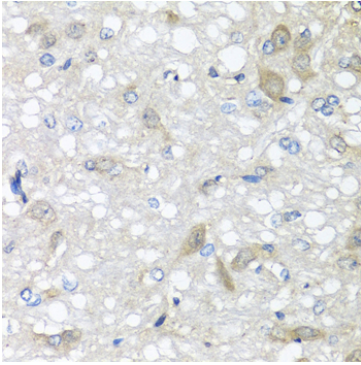
### Storage

Store at -20°C. Avoid freeze / thaw cycles.

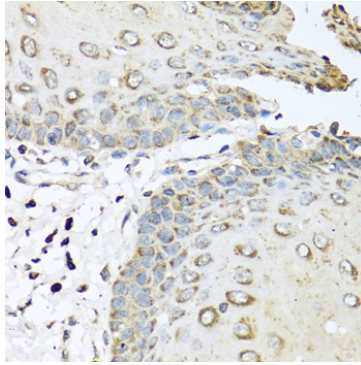
Buffer: PBS with 0.02% sodium azide,50% glycerol,pH7.3.

## Validation Data

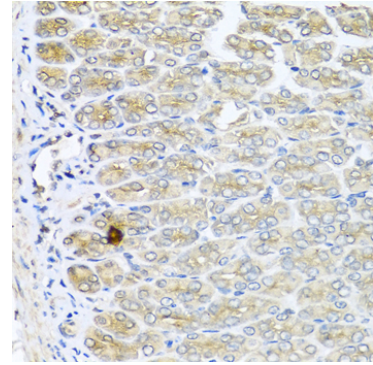
---



Immunohistochemistry of paraffin-embedded rat brain using IL6 antibody (A11114) at dilution of 1:100 (40x lens).



Immunohistochemistry of paraffin-embedded human esophagus using IL6 antibody (A11114) at dilution of 1:100 (40x lens).



Immunohistochemistry of paraffin-embedded mouse stomach using IL6 antibody (A11114) at dilution of 1:100 (40x lens).