

# Vitronectin Rabbit pAb

Catalog No.: A10902

## Basic Information

---

**Observed MW**

72kDa

**Calculated MW**

54kDa

**Category**

Primary antibody

**Applications**

WB,FC

**Cross-Reactivity**

Human

## Background

---

The protein encoded by this gene functions in part as an adhesive glycoprotein. Differential expression of this protein can promote either cell adhesion or migration as it links cells to the extracellular matrix through a variety of ligands. These ligands include integrins, plasminogen activator inhibitor-1, and urokinase plasminogen activator receptor. This secreted protein can be present in the plasma as a monomer or dimer and forms a multimer in the extracellular matrix of several tissues. This protein also inhibits the membrane-damaging effect of the terminal cytolytic complement pathway and binds to several serpin serine protease inhibitors. This protein can also promote extracellular matrix degradation and thus plays a role in tumorigenesis. It is involved in a variety of other biological processes such as the regulation of the coagulation pathway, wound healing, and tissue remodeling. The heparin-binding domain of this protein give it anti-microbial properties. It is also a lipid binding protein that forms a principal component of high density lipoprotein.

## Recommended Dilutions

---

<b>WB</b>	1:500 - 1:1000
<b>FC</b>	1:20 - 1:50

## Immunogen Information

---

**Gene ID**

7448

**Swiss Prot**

P04004

**Immunogen**

A synthetic peptide of human Vitronectin

**Synonyms**

VN; V75; VNT; Vitronectin

## Contact

---

 | [www.abclonal.com](http://www.abclonal.com)

## Product Information

---

**Source**

Rabbit

**Isotype**

IgG

**Purification**

Affinity purification

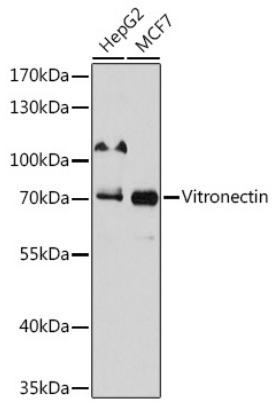
**Storage**

Store at 4°C. Avoid freeze / thaw cycles.

Buffer: PBS with 0.02% sodium azide,pH7.3.

## Validation Data

---



Western blot analysis of various lysates using Vitronectin Rabbit pAb (A10902) at 1:1000 dilution.  
Secondary antibody: HRP Goat Anti-Rabbit IgG (H+L) (AS014) at 1:10000 dilution.  
Lysates/proteins: 25µg per lane.  
Blocking buffer: 3% nonfat dry milk in TBST.  
Detection: ECL Basic Kit (RM00020).  
Exposure time: 30s.