

A1059

Leader in Biomolecular Solutions for Life Science



## [KD Validated] MLST8 Rabbit pAb

Catalog No.: A1059

### Basic Information

---

**Observed MW**

37kDa

**Calculated MW**

36kDa

**Category**

Polyclonal Antibody

**Applications**

WB,ELISA

**Cross-Reactivity**

Human,Mouse,Rat

### Background

---

Enables protein serine/threonine kinase activator activity. Involved in TORC1 signaling; positive regulation of TOR signaling; and regulation of actin cytoskeleton organization. Part of TORC1 complex and TORC2 complex.

### Recommended Dilutions

---

WB 1:500 - 1:2000

### Immunogen Information

---

**Gene ID**

64223

**Swiss Prot**

Q9BVC4

**Immunogen**

Recombinant fusion protein containing a sequence corresponding to amino acids 1-326 of human MLST8 (NP\_001186103.1).

**Synonyms**

GBL; LST8; POP3; WAT1; GbetaL; [KD Validated] MLST8

### Contact

---



[www.abclonal.com](http://www.abclonal.com)

### Product Information

---

**Source**

Rabbit

**Isotype**

IgG

**Purification**

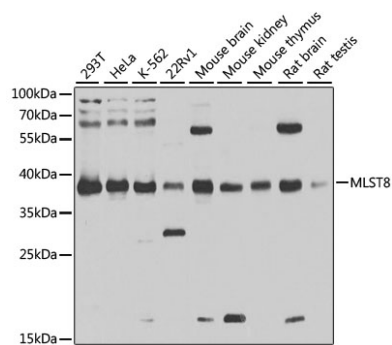
Affinity purification

**Storage**

Store at -20°C. Avoid freeze / thaw cycles.

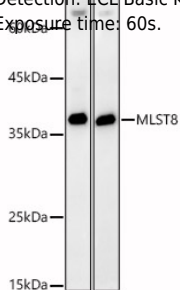
Buffer: PBS with 0.02% sodium azide,50% glycerol,pH7.3.

## Validation Data



Western blot analysis of extracts of various cell lines, using MLST8 antibody (A1059) at 1:1000 dilution.  
 Secondary antibody: HRP Goat Anti-Rabbit IgG (H+L) (AS014) at 1:10000 dilution.  
 Lysates/proteins: 25µg per lane.  
 Blocking buffer: 3% nonfat dry milk in TBST.  
 Detection: ECL Basic Kit (RM00020).  
 Exposure time: 5s.

Western blot analysis of various lysates, using MLST8 Rabbit pAb (A1059) at 1:400 dilution.  
 Secondary antibody: HRP Goat Anti-Rabbit IgG (H+L) (AS014) at 1:10000 dilution.  
 Lysates/proteins: 25µg per lane.  
 Blocking buffer: 3% nonfat dry milk in TBST.  
 Detection: ECL Basic Kit (RM00020).  
 Exposure time: 60s.



Western blot analysis of extracts from wild type(WT) and MLST8 knockdown (KD) 293T cells, using MLST8 Rabbit pAb (A1059) at 1:400 dilution.  
 Secondary antibody: HRP Goat Anti-Rabbit IgG (H+L) (AS014) at 1:10000 dilution.  
 Lysates/proteins: 25µg per lane.  
 Blocking buffer: 3% nonfat dry milk in TBST.  
 Detection: ECL Basic Kit (RM00020).  
 Exposure time: 60s.

