

A10498

Leader in Biomolecular Solutions for Life Science



ANO1 Rabbit pAb

Catalog No.: A10498 **4 Publications**

Basic Information

Observed MW

150kDa

Calculated MW

114kDa

Category

Polyclonal Antibody

Applications

WB,IF/ICC,ELISA

Cross-Reactivity

Human,Mouse

Background

Enables calcium activated cation channel activity; intracellular calcium activated chloride channel activity; and iodide transmembrane transporter activity. Involved in cation transport; inorganic anion transport; and positive regulation of insulin secretion involved in cellular response to glucose stimulus. Located in apical plasma membrane and nucleoplasm.

Recommended Dilutions

WB 1:1000 - 1:2000

IF/ICC 1:100 - 1:200

Immunogen Information

Gene ID

55107

Swiss Prot

Q5XXA6

Immunogen

Recombinant fusion protein containing a sequence corresponding to amino acids 400-500 of human ANO1 (NP_060513.5).

Synonyms

DOG1; INDMS; TAOS2; ORAOV2; TMEM16A; ANO1

Contact



www.abclonal.com

Product Information

Source

Rabbit

Isotype

IgG

Purification

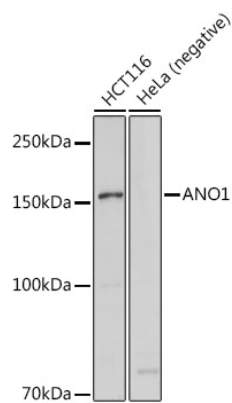
Affinity purification

Storage

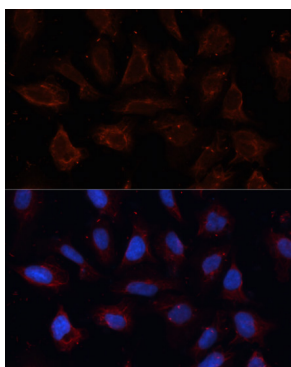
Store at -20°C. Avoid freeze / thaw cycles.

Buffer: PBS with 0.05% proclin300,50% glycerol,pH7.3.

Validation Data



Western blot analysis of various lysates using ANO1 Rabbit pAb (A10498) at 1:1000 dilution. Secondary antibody: HRP Goat Anti-Rabbit IgG (H+L) (AS014) at 1:10000 dilution. Lysates/proteins: 25µg per lane. Blocking buffer: 3% nonfat dry milk in TBST. Detection: ECL Basic Kit (RM00020). Exposure time: 1s.



Immunofluorescence analysis of U2OS cells using ANO1 Rabbit pAb (A10498) at dilution of 1:100. Secondary antibody: Cy3 Goat Anti-Rabbit IgG (H+L) (AS007) at 1:500 dilution. Blue: DAPI for nuclear staining.