

A10438

Leader in Biomolecular Solutions for Life Science



ADAM10 Rabbit pAb

Catalog No.: A10438 **11 Publications**

Basic Information

Observed MW

90kDa

Calculated MW

84kDa

Category

Polyclonal Antibody

Applications

WB,IF/ICC,ELISA

Cross-Reactivity

Human,Mouse

Background

Members of the ADAM family are cell surface proteins with a unique structure possessing both potential adhesion and protease domains. This gene encodes an ADAM family member that cleaves many proteins including TNF-alpha and E-cadherin. Alternate splicing results in multiple transcript variants encoding different proteins that may undergo similar processing.

Recommended Dilutions

WB	1:500 - 1:1000
IF/ICC	1:50 - 1:200

Immunogen Information

Gene ID	Swiss Prot
102	O14672

Immunogen

Recombinant fusion protein containing a sequence corresponding to amino acids 218-433 of human ADAM10 (NP_001101.1).

Synonyms

RAK; kuz; AD10; AD18; MADM; CD156c; CDw156; HsT18717; ADAM10

Contact



www.abclonal.com

Product Information

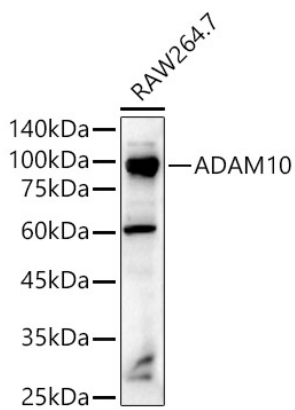
Source	Isotype	Purification
Rabbit	IgG	Affinity purification

Storage

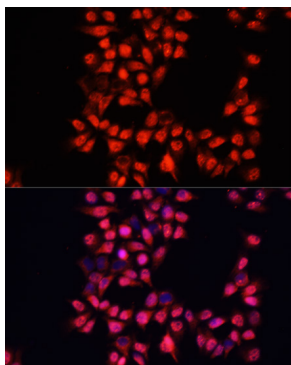
Store at -20°C. Avoid freeze / thaw cycles.

Buffer: PBS with 0.05% proclin300,50% glycerol,pH7.3.

Validation Data



Western blot analysis of RAW264.7, using ADAM10 antibody (A10438) at 1:1000 dilution.
Secondary antibody: HRP Goat Anti-Rabbit IgG (H+L) (AS014) at 1:10000 dilution.
Lysates/proteins: 25µg per lane.
Blocking buffer: 3% nonfat dry milk in TBST.
Detection: ECL Enhanced Kit (RM00021).
Exposure time: 20s.



Immunofluorescence analysis of HeLa cells using ADAM10 antibody (A10438) at dilution of 1:100. Blue: DAPI for nuclear staining.