

Matrin 3 Rabbit mAb

Catalog No.: A1027 **Recombinant**

Basic Information

Catalog No.

A1027

Observed MW

120kDa

Calculated MW

125kDa

Category

Primary antibody

Applications

WB,IHC,IF

Cross-Reactivity

Human, Mouse, Rat

Recommended Dilutions

WB	1:500 - 1:2000
IHC	1:50 - 1:200
IF	1:50 - 1:200

Contact

 | www.abclonal.com

Background

This gene encodes a nuclear matrix protein, which is proposed to stabilize certain messenger RNA species. Mutations of this gene are associated with distal myopathy 2, which often includes vocal cord and pharyngeal weakness. Alternatively spliced transcript variants, including read-through transcripts composed of the upstream small nucleolar RNA host gene 4 (non-protein coding) and matrin 3 gene sequence, have been identified. Pseudogenes of this gene are located on chromosomes 1 and X. [provided by RefSeq, Aug 2013]

Immunogen Information

Gene ID	Swiss Prot
9782	P43243

Immunogen

A synthesized peptide derived from human Matrin 3

Synonyms

ALS21; MPD2; VCPDM

Product Information

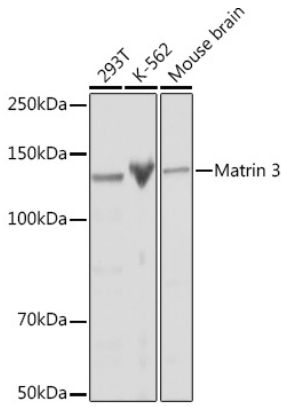
Source	Isotype	Purification
Rabbit	IgG	Affinity purification

Storage

Store at -20°C. Avoid freeze / thaw cycles.

Buffer: PBS with 0.02% sodium azide,0.05% BSA,50% glycerol,pH7.3.

Validation Data



Western blot analysis of extracts of various cell lines, using Matrin 3 Rabbit mAb (A1027) at 1:1000 dilution.

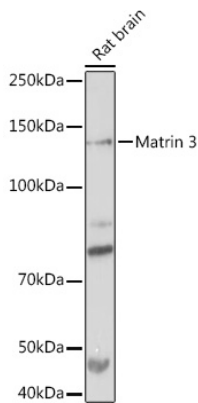
Secondary antibody: HRP Goat Anti-Rabbit IgG (H+L) (AS014) at 1:10000 dilution.

Lysates/proteins: 25ug per lane.

Blocking buffer: 3% nonfat dry milk in TBST.

Detection: ECL Basic Kit (RM00020).

Exposure time: 10s.



Western blot analysis of extracts of Rat brain, using Matrin 3 Rabbit mAb (A1027) at 1:1000 dilution.

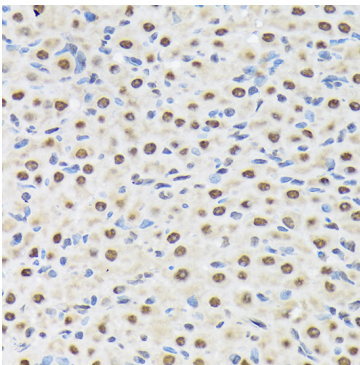
Secondary antibody: HRP Goat Anti-Rabbit IgG (H+L) (AS014) at 1:10000 dilution.

Lysates/proteins: 25ug per lane.

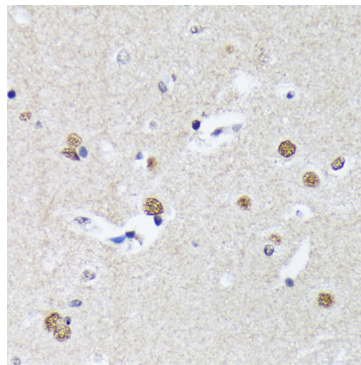
Blocking buffer: 3% nonfat dry milk in TBST.

Detection: ECL Basic Kit (RM00020).

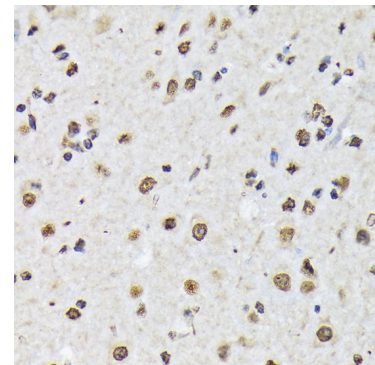
Exposure time: 30s.



Immunohistochemistry of paraffin-embedded rat ovary using Matrin 3 Rabbit mAb (A1027) at dilution of 1:100 (40x lens).

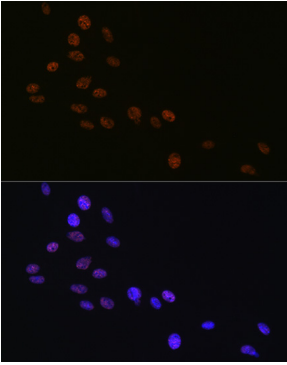


Immunohistochemistry of paraffin-embedded human brain using Matrin 3 Rabbit mAb (A1027) at dilution of 1:100 (40x lens).

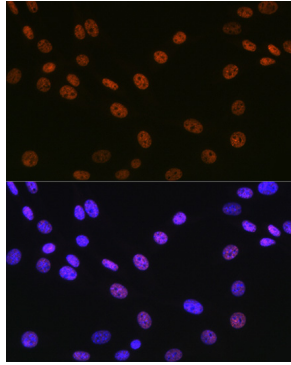


Immunohistochemistry of paraffin-embedded mouse spinal cord using Matrin 3 Rabbit mAb (A1027) at dilution of 1:100 (40x lens).

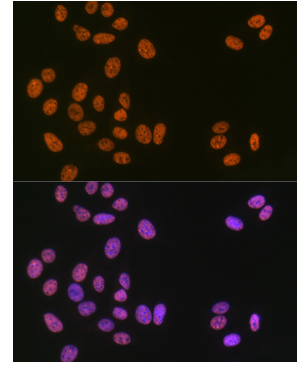
Validation Data



Immunofluorescence analysis of C6 cells using Matrin 3 Rabbit mAb (A1027) at dilution of 1:100 (40x lens). Blue: DAPI for nuclear staining.



Immunofluorescence analysis of NIH-3T3 cells using Matrin 3 Rabbit mAb (A1027) at dilution of 1:100 (40x lens). Blue: DAPI for nuclear staining.



Immunofluorescence analysis of U-2 OS cells using Matrin 3 Rabbit mAb (A1027) at dilution of 1:100 (40x lens). Blue: DAPI for nuclear staining.