

# ENC1 Rabbit pAb

Catalog No.: A10257

## Basic Information

### Catalog No.

A10257

### Observed MW

66kDa

### Calculated MW

57kDa/66kDa

### Category

Primary antibody

### Applications

WB

### Cross-Reactivity

Human, Mouse, Rat

## Recommended Dilutions

WB 1:1000 - 1:2000

## Background

This gene encodes a member of the kelch-related family of actin-binding proteins. The encoded protein plays a role in the oxidative stress response as a regulator of the transcription factor Nrf2, and expression of this gene may play a role in malignant transformation. Alternatively spliced transcript variants encoding multiple isoforms have been observed for this gene.

## Immunogen Information

### Gene ID

8507

### Swiss Prot

O14682

### Immunogen

Recombinant fusion protein containing a sequence corresponding to amino acids 1-270 of human ENC1 (NP\_003624.1).

### Synonyms

ENC1;CCL28;ENC-1;KLHL35;KLHL37;NRPB;PIG10;TP53I10

## Contact

 | [www.abclonal.com](http://www.abclonal.com)

## Product Information

### Source

Rabbit

### Isotype

IgG

### Purification

Affinity purification

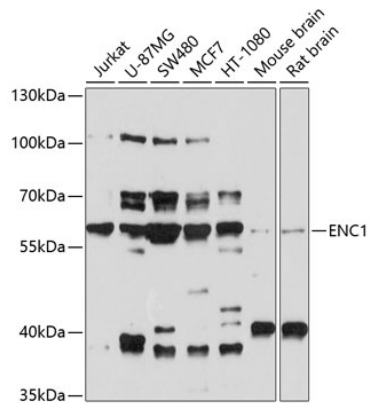
### Storage

Store at -20°C. Avoid freeze / thaw cycles.

Buffer: PBS with 0.02% sodium azide,50% glycerol,pH7.3.

## Validation Data

---



Western blot analysis of extracts of various cell lines, using ENC1 antibody (A10257) at 1:1000 dilution.

Secondary antibody: HRP Goat Anti-Rabbit IgG (H+L) (AS014) at 1:10000 dilution.

Lysates/proteins: 25ug per lane.

Blocking buffer: 3% nonfat dry milk in TBST.

Detection: ECL Basic Kit (RM00020).

Exposure time: 40s.