

PLA2G10 Rabbit pAb

Catalog No.: A10256

Basic Information

Catalog No.

A10256

Observed MW

18kDa

Calculated MW

18kDa

Category

Primary antibody

Applications

WB

Cross-Reactivity

Human

Recommended Dilutions

WB 1:500 - 1:2000

Background

This gene encodes a member of the phospholipase A2 family of proteins. Alternative splicing results in multiple transcript variants, at least one of which encodes a preproprotein that is proteolytically processed to generate the mature enzyme. This calcium-dependent enzyme hydrolyzes glycerophospholipids to produce free fatty acids and lysophospholipids. In one example, this enzyme catalyzes the release of arachidonic acid from cell membrane phospholipids, thus playing a role in the production of various inflammatory lipid mediators, such as prostaglandins. The encoded protein may promote the survival of breast cancer cells through its role in lipid metabolism.

Immunogen Information

Gene ID

8399

Swiss Prot

O15496

Immunogen

A synthetic peptide corresponding to a sequence within amino acids 50-150 of human PLA2G10 (NP_003552.1).

Synonyms

PLA2G10;GXPLA2;GXSPLA2;SPLA2;sPLA2-X

Contact

 | www.abclonal.com

Product Information

Source

Rabbit

Isotype

IgG

Purification

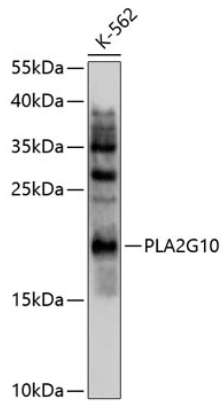
Affinity purification

Storage

Store at -20°C. Avoid freeze / thaw cycles.

Buffer: PBS with 0.02% sodium azide,50% glycerol,pH7.3.

Validation Data



Western blot analysis of extracts of K562 cells, using PLA2G10 antibody (A10256) at 1:1000 dilution.
Secondary antibody: HRP Goat Anti-Rabbit IgG (H+L) (AS014) at 1:10000 dilution.
Lysates/proteins: 25ug per lane.
Blocking buffer: 3% nonfat dry milk in TBST.
Detection: ECL Basic Kit (RM00020).
Exposure time: 90s.