

# XPNPEP2 Rabbit pAb

Catalog No.: A10255

## Basic Information

---

**Catalog No.**

A10255

**Observed MW**

76kDa

**Calculated MW**

75kDa

**Category**

Primary antibody

**Applications**

WB

**Cross-Reactivity**

Human, Mouse, Rat

## Recommended Dilutions

---

**WB** 1:1000 - 1:2000

## Background

---

Aminopeptidase P is a hydrolase specific for N-terminal imido bonds, which are common to several collagen degradation products, neuropeptides, vasoactive peptides, and cytokines. Structurally, the enzyme is a member of the 'pita bread fold' family and occurs in mammalian tissues in both soluble and GPI-anchored membrane-bound forms. A membrane-bound and soluble form of this enzyme have been identified as products of two separate genes.

## Immunogen Information

---

**Gene ID**

7512

**Swiss Prot**

O43895

**Immunogen**

Recombinant fusion protein containing a sequence corresponding to amino acids 22-240 of human XPNPEP2 (NP\_003390.4).

**Synonyms**

XPNPEP2;AEACEI;APP2

## Contact

---

 | [www.abclonal.com](http://www.abclonal.com)

## Product Information

---

**Source**

Rabbit

**Isotype**

IgG

**Purification**

Affinity purification

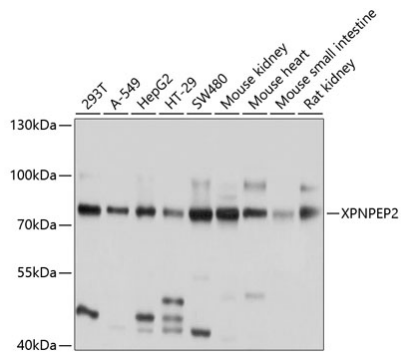
**Storage**

Store at -20°C. Avoid freeze / thaw cycles.

Buffer: PBS with 0.02% sodium azide,50% glycerol,pH7.3.

## Validation Data

---



Western blot analysis of extracts of various cell lines, using XPNPEP2 antibody (A10255) at 1:1000 dilution.

Secondary antibody: HRP Goat Anti-Rabbit IgG (H+L) (AS014) at 1:10000 dilution.

Lysates/proteins: 25ug per lane.

Blocking buffer: 3% nonfat dry milk in TBST.

Detection: ECL Basic Kit (RM00020).

Exposure time: 1s.