

NR2F2 Rabbit pAb

Catalog No.: A10251

Basic Information

Catalog No.

A10251

Observed MW

45kDa

Calculated MW

29kDa/31kDa/45kDa

Category

Primary antibody

Applications

WB, IHC, IF

Cross-Reactivity

Human, Mouse, Rat

Recommended Dilutions

WB	1:500 - 1:2000
IHC	1:100 - 1:200
IF	1:50 - 1:200

Contact

 | www.abclonal.com

Background

This gene encodes a member of the steroid thyroid hormone superfamily of nuclear receptors. The encoded protein is a ligand inducible transcription factor that is involved in the regulation of many different genes. Alternate splicing results in multiple transcript variants.

Immunogen Information

Gene ID	Swiss Prot
7026	P24468

Immunogen

A synthetic peptide corresponding to a sequence within amino acids 1-100 of human NR2F2 (NP_066285.1).

Synonyms

NR2F2;ARP1;CHTD4;COUPTFB;COUPTFII;NF-E3;NR2F1;SVP40;TFCOUP2

Product Information

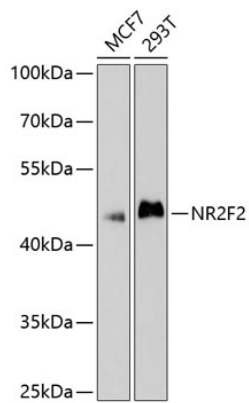
Source	Isotype	Purification
Rabbit	IgG	Affinity purification

Storage

Store at -20°C. Avoid freeze / thaw cycles.

Buffer: PBS with 0.02% sodium azide,50% glycerol,pH7.3.

Validation Data



Western blot analysis of extracts of various cell lines, using NR2F2 antibody (A10251) at 1:1000 dilution.

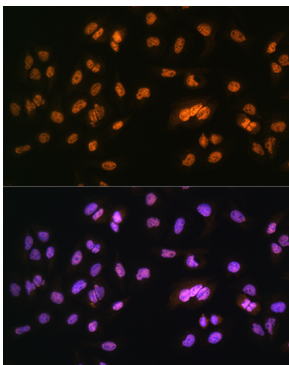
Secondary antibody: HRP Goat Anti-Rabbit IgG (H+L) (AS014) at 1:10000 dilution.

Lysates/proteins: 25ug per lane.

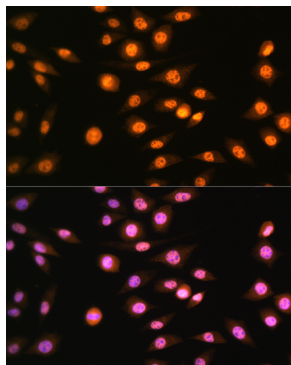
Blocking buffer: 3% nonfat dry milk in TBST.

Detection: ECL Basic Kit (RM00020).

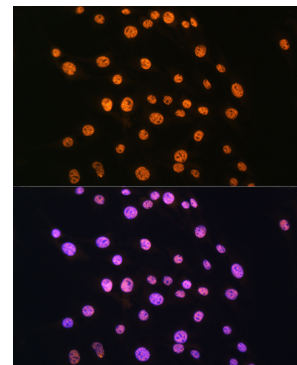
Exposure time: 90s.



Immunofluorescence analysis of U2OS cells using NR2F2 Rabbit pAb (A10251) at dilution of 1:100. Blue: DAPI for nuclear staining.



Immunofluorescence analysis of L929 cells using NR2F2 Rabbit pAb (A10251) at dilution of 1:100. Blue: DAPI for nuclear staining.



Immunofluorescence analysis of C6 cells using NR2F2 Rabbit pAb (A10251) at dilution of 1:100. Blue: DAPI for nuclear staining.