

PLC beta 3 (PLCB3) Rabbit pAb

Catalog No.: A10236

Basic Information

Catalog No.

A10236

Observed MW

160kDa

Calculated MW

131kDa/138kDa

Category

Primary antibody

Applications

WB, IHC

Cross-Reactivity

Human, Mouse, Rat

Recommended Dilutions

WB	1:500 - 1:2000
IHC	1:50 - 1:200

Contact

 | www.abclonal.com

Background

This gene encodes a member of the phosphoinositide phospholipase C beta enzyme family that catalyze the production of the secondary messengers diacylglycerol and inositol 1,4,5-triphosphate from phosphatidylinositol in G-protein-linked receptor-mediated signal transduction. Alternative splicing results in multiple transcript variants.

Immunogen Information

Gene ID	Swiss Prot
5331	Q01970

Immunogen

A synthetic peptide corresponding to a sequence within amino acids 1050-1150 of human PLC beta 3 (PLC beta 3 (PLCB3)) (NP_000923.1).

Synonyms

PLCB3

Product Information

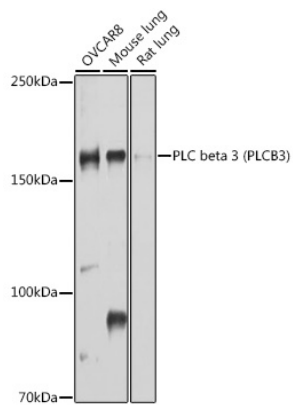
Source	Isotype	Purification
Rabbit	IgG	Affinity purification

Storage

Store at -20°C. Avoid freeze / thaw cycles.

Buffer: PBS with 0.02% sodium azide, 50% glycerol, pH 7.3.

Validation Data



Western blot analysis of extracts of various cell lines, using PLC beta 3 (PLC beta 3 (PLCB3)) antibody (A10236) at 1:1000 dilution.

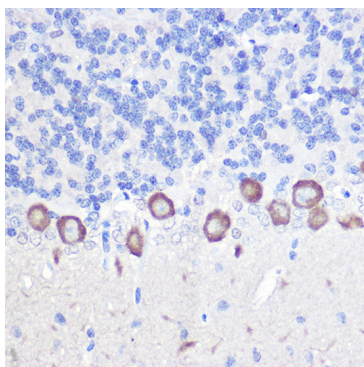
Secondary antibody: HRP Goat Anti-Rabbit IgG (H+L) (AS014) at 1:10000 dilution.

Lysates/proteins: 25ug per lane.

Blocking buffer: 3% nonfat dry milk in TBST.

Detection: ECL Basic Kit (RM00020).

Exposure time: 30s.



Immunohistochemistry of paraffin-embedded rat brain using PLC beta 3 (PLC beta 3 (PLCB3)) Rabbit pAb (A10236) at dilution of 1:100 (40x lens).