

# PCDH1 Rabbit pAb

Catalog No.: A10234

## Basic Information

---

**Catalog No.**

A10234

**Observed MW**

115kDa

**Calculated MW**

114kDa/133kDa

**Category**

Primary antibody

**Applications**

WB

**Cross-Reactivity**

Human, Mouse

## Recommended Dilutions

---

**WB** 1:1000 - 1:2000

## Background

---

This gene belongs to the protocadherin subfamily within the cadherin superfamily. The encoded protein is a membrane protein found at cell-cell boundaries. It is involved in neural cell adhesion, suggesting a possible role in neuronal development. The protein includes an extracellular region, containing 7 cadherin-like domains, a transmembrane region and a C-terminal cytoplasmic region. Cells expressing the protein showed cell aggregation activity. Alternative splicing occurs in this gene.

## Immunogen Information

---

**Gene ID**

5097

**Swiss Prot**

Q08174

**Immunogen**

Recombinant fusion protein containing a sequence corresponding to amino acids 60-220 of human PCDH1 (NP\_002578.2).

**Synonyms**

PCDH1;PC42;PCDH42

## Contact

---

 | [www.abclonal.com](http://www.abclonal.com)

## Product Information

---

**Source**

Rabbit

**Isotype**

IgG

**Purification**

Affinity purification

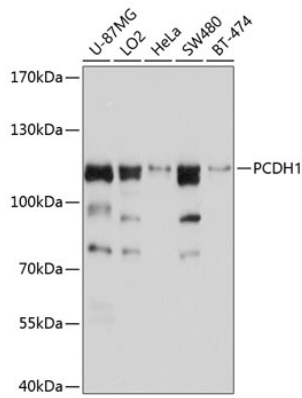
**Storage**

Store at -20°C. Avoid freeze / thaw cycles.

Buffer: PBS with 0.02% sodium azide,50% glycerol,pH7.3.

## Validation Data

---



Western blot analysis of extracts of various cell lines, using PCDH1 antibody (A10234) at 1:1000 dilution.

Secondary antibody: HRP Goat Anti-Rabbit IgG (H+L) (AS014) at 1:10000 dilution.

Lysates/proteins: 25ug per lane.

Blocking buffer: 3% nonfat dry milk in TBST.

Detection: ECL Basic Kit (RM00020).

Exposure time: 5s.