

DMT1 Rabbit pAb

Catalog No.: A10231 **1 Publications**

Basic Information

Catalog No.

A10231

Observed MW

72kDa

Calculated MW

61kDa/62kDa/64kDa/65kDa

Category

Primary antibody

Applications

WB, IHC, IF

Cross-Reactivity

Human, Mouse, Rat

Recommended Dilutions

WB	1:1000 - 1:2000
IHC	1:50 - 1:200
IF	1:50 - 1:200

Contact

 | www.abclonal.com

Background

This gene encodes a member of the solute carrier family 11 protein family. The product of this gene transports divalent metals and is involved in iron absorption. Mutations in this gene are associated with hypochromic microcytic anemia with iron overload. A related solute carrier family 11 protein gene is located on chromosome 2. Multiple transcript variants encoding different isoforms have been found for this gene.

Immunogen Information

Gene ID	Swiss Prot
4891	P49281

Immunogen

Recombinant fusion protein containing a sequence corresponding to amino acids 1-100 of human DMT1 (NP_000608.1).

Synonyms

SLC11A2;AHMIO1;DCT1;DMT1;NRAMP2

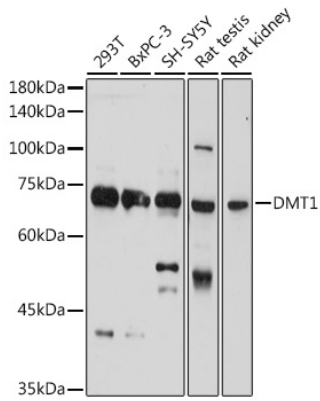
Product Information

Source	Isotype	Purification
Rabbit	IgG	Affinity purification

Storage

Store at -20°C. Avoid freeze / thaw cycles.
Buffer: PBS with 0.02% sodium azide, 50% glycerol, pH7.3.

Validation Data



Western blot analysis of extracts of various cell lines, using DMT1 Rabbit pAb (A10231) at 1:1000 dilution.

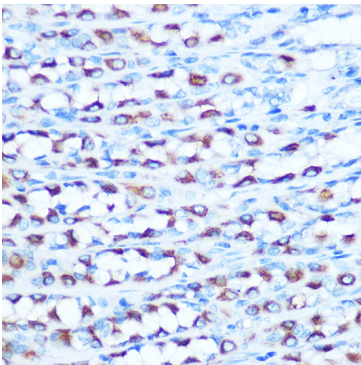
Secondary antibody: HRP Goat Anti-Rabbit IgG (H+L) (AS014) at 1:10000 dilution.

Lysates/proteins: 25ug per lane.

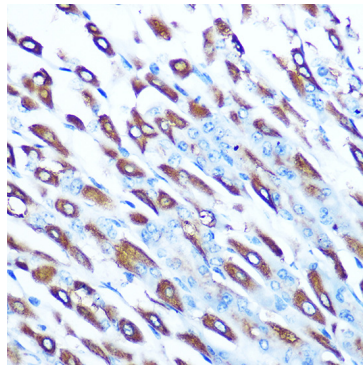
Blocking buffer: 3% nonfat dry milk in TBST.

Detection: ECL Basic Kit (RM00020).

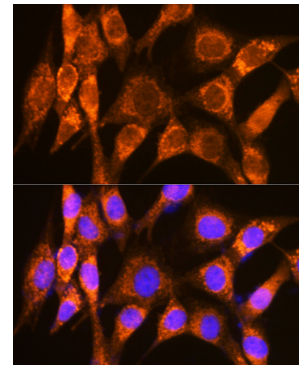
Exposure time: 180s.



Immunohistochemistry of paraffin-embedded rat stomach using DMT1 Rabbit pAb (A10231) at dilution of 1:100 (40x lens).



Immunohistochemistry of paraffin-embedded mouse stomach using DMT1 Rabbit pAb (A10231) at dilution of 1:100 (40x lens).



Immunofluorescence analysis of NIH-3T3 cells using DMT1 Rabbit pAb (A10231) at dilution of 1:100 (40x lens). Blue: DAPI for nuclear staining.