

Cytokeratin 18 (KRT18) Rabbit pAb

Catalog No.: A1022 **2 Publications**

Basic Information

Catalog No.

A1022

Observed MW

45KDa

Calculated MW

48kDa

Category

Primary antibody

Applications

WB, IHC, IF

Cross-Reactivity

Human, Mouse, Rat

Background

KRT18 encodes the type I intermediate filament chain keratin 18. Keratin 18, together with its filament partner keratin 8, are perhaps the most commonly found members of the intermediate filament gene family. They are expressed in single layer epithelial tissues of the body. Mutations in this gene have been linked to cryptogenic cirrhosis. Two transcript variants encoding the same protein have been found for this gene.

Recommended Dilutions

WB	1:500 - 1:2000
IHC	1:50 - 1:100
IF	1:50 - 1:100

Immunogen Information

Gene ID	Swiss Prot
3875	P05783

Immunogen

Recombinant fusion protein containing a sequence corresponding to amino acids 127-430 of human Cytokeratin 18 (KRT18) (NP_000215.1).

Synonyms

KRT18;CK-18;CYK18;K18;keratin 18

Contact

 | www.abclonal.com

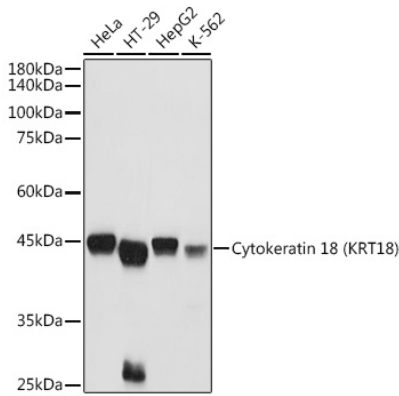
Product Information

Source	Isotype	Purification
Rabbit	IgG	Affinity purification

Storage

Store at -20°C. Avoid freeze / thaw cycles.
Buffer: PBS with 0.02% sodium azide, 50% glycerol, pH7.3.

Validation Data



Western blot analysis of extracts of various cell lines, using Cytokeratin 18 (KRT18) antibody (A1022) at 1:3000 dilution.

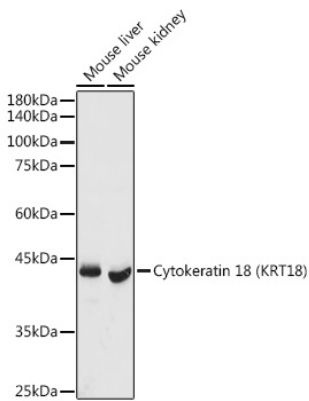
Secondary antibody: HRP Goat Anti-Rabbit IgG (H+L) (AS014) at 1:10000 dilution.

Lysates/proteins: 25ug per lane.

Blocking buffer: 3% nonfat dry milk in TBST.

Detection: ECL Basic Kit (RM00020).

Exposure time: 1s.



Western blot analysis of extracts of various cell lines, using Cytokeratin 18 (KRT18) antibody (A1022) at 1:3000 dilution.

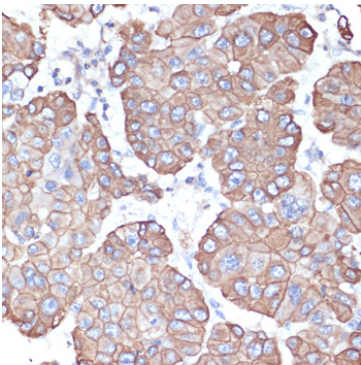
Secondary antibody: HRP Goat Anti-Rabbit IgG (H+L) (AS014) at 1:10000 dilution.

Lysates/proteins: 25ug per lane.

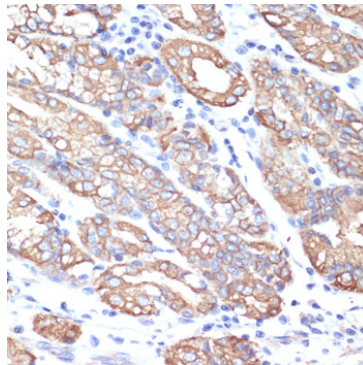
Blocking buffer: 3% nonfat dry milk in TBST.

Detection: ECL Basic Kit (RM00020).

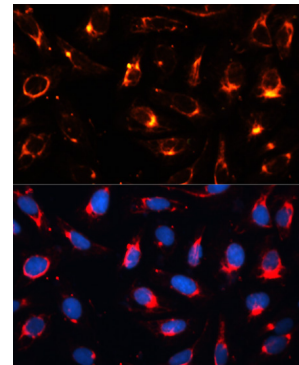
Exposure time: 10s.



Immunohistochemistry of paraffin-embedded human liver cancer using Cytokeratin 18 (KRT18) antibody (A1022) at dilution of 1:100 (40x lens).



Immunohistochemistry of paraffin-embedded human small intestine using Cytokeratin 18 (KRT18) antibody (A1022) at dilution of 1:100 (40x lens).



Immunofluorescence analysis of U2OS cells using Cytokeratin 18 (KRT18) antibody (A1022) at dilution of 1:100. Blue: DAPI for nuclear staining.