

# Eph receptor B3 (EPHB3) Rabbit pAb

Catalog No.: A10214

## Basic Information

### Catalog No.

A10214

### Observed MW

110kDa

### Calculated MW

110kDa

### Category

Primary antibody

### Applications

WB

### Cross-Reactivity

Human, Mouse, Rat

## Recommended Dilutions

WB 1:500 - 1:2000

## Background

Ephrin receptors and their ligands, the ephrins, mediate numerous developmental processes, particularly in the nervous system. Based on their structures and sequence relationships, ephrins are divided into the ephrin-A (EFNA) class, which are anchored to the membrane by a glycosylphosphatidylinositol linkage, and the ephrin-B (EFNB) class, which are transmembrane proteins. The Eph family of receptors are divided into two groups based on the similarity of their extracellular domain sequences and their affinities for binding ephrin-A and ephrin-B ligands. Ephrin receptors make up the largest subgroup of the receptor tyrosine kinase (RTK) family. This gene encodes a receptor for ephrin-B family members.

## Immunogen Information

### Gene ID

2049

### Swiss Prot

P54753

### Immunogen

Recombinant fusion protein containing a sequence corresponding to amino acids 270-560 of human Eph receptor B3 (Eph receptor B3 (EPHB3)) (NP\_004434.2).

### Synonyms

EPHB3;EK2;ETK2;HEK2;TYRO6

## Contact

 | [www.abclonal.com](http://www.abclonal.com)

## Product Information

### Source

Rabbit

### Isotype

IgG

### Purification

Affinity purification

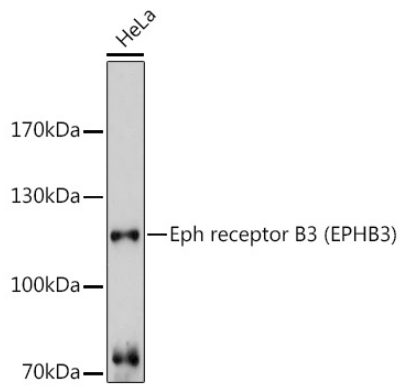
### Storage

Store at -20°C. Avoid freeze / thaw cycles.

Buffer: PBS with 0.02% sodium azide, 50% glycerol, pH7.3.

## Validation Data

---



Western blot analysis of extracts of HeLa cells, using Eph receptor B3 (Eph receptor B3 (EPHB3)) antibody (A10214) at 1:3000 dilution.  
Secondary antibody: HRP Goat Anti-Rabbit IgG (H+L) (AS014) at 1:10000 dilution.  
Lysates/proteins: 25ug per lane.  
Blocking buffer: 3% nonfat dry milk in TBST.  
Detection: ECL Basic Kit (RM00020).  
Exposure time: 90s.