

A1021

Leader in Biomolecular Solutions for Life Science



# Alpha-1 Antichymotrypsin (SERPINA3) Rabbit pAb

Catalog No.: A1021

6 Publications

## Basic Information

### Observed MW

50-76kDa

### Calculated MW

48kDa

### Category

Polyclonal Antibody

### Applications

WB,IHC-P,ELISA

### Cross-Reactivity

Human

## Background

The protein encoded by this gene is a member of the serpin family of proteins, a group of proteins that inhibit serine proteases. This gene is one in a cluster of serpin genes located on the q arm of chromosome 14. Polymorphisms in this protein appear to be tissue specific and influence protease targeting. Variations in this protein's sequence have been implicated in Alzheimer's disease, and deficiency of this protein has been associated with liver disease. Mutations have been identified in patients with Parkinson disease and chronic obstructive pulmonary disease.

## Recommended Dilutions

|       |               |
|-------|---------------|
| WB    | 1:100 - 1:500 |
| IHC-P | 1:50 - 1:200  |

## Immunogen Information

|                |                   |
|----------------|-------------------|
| <b>Gene ID</b> | <b>Swiss Prot</b> |
| 12             | P01011            |

### Immunogen

Recombinant fusion protein containing a sequence corresponding to amino acids 24-423 of human Alpha-1 Antichymotrypsin (Alpha-1 Antichymotrypsin (SERPINA3)) (NP\_001076.2).

### Synonyms

ACT; AACT; GIG24; GIG25; Alpha-1 Antichymotrypsin (SERPINA3)

## Contact

 [www.abclonal.com](http://www.abclonal.com)

## Product Information

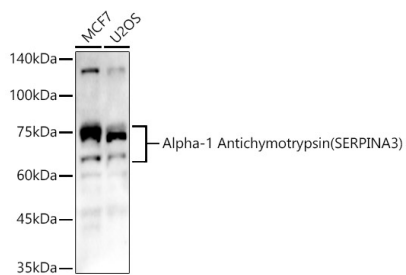
|               |                |                       |
|---------------|----------------|-----------------------|
| <b>Source</b> | <b>Isotype</b> | <b>Purification</b>   |
| Rabbit        | IgG            | Affinity purification |

### Storage

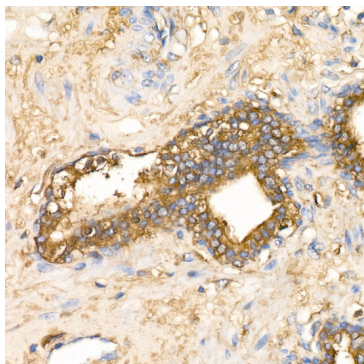
Store at -20°C. Avoid freeze / thaw cycles.

Buffer: PBS with 0.05% proclin300,50% glycerol,pH7.3.

## Validation Data



Western blot analysis of various lysates, using Alpha-1 Antichymotrypsin (SERPINA3) Rabbit pAb (A1021) at 1:400 dilution.  
Secondary antibody: HRP Goat Anti-Rabbit IgG (H+L) (AS014) at 1:10000 dilution.  
Lysates/proteins: 25µg per lane.  
Blocking buffer: 3% nonfat dry milk in TBST.  
Detection: ECL Basic Kit (RM00020).  
Exposure time: 60s.



Immunohistochemistry analysis of paraffin-embedded Human prostate cancer tissue using Alpha-1 Antichymotrypsin (SERPINA3) Rabbit pAb (A1021) at a dilution of 1:100 (40x lens). High pressure antigen retrieval performed with 0.01M Citrate Buffer (pH 6.0) prior to IHC staining.