

# RBBP8 Rabbit pAb

Catalog No.: A10201 **1 Publications**

## Basic Information

**Catalog No.**

A10201

**Observed MW**

110kDa

**Calculated MW**

98kDa/101kDa/102kDa

**Category**

Primary antibody

**Applications**

WB

**Cross-Reactivity**

Human, Mouse, Rat

## Recommended Dilutions

WB 1:500 - 1:2000

## Background

The protein encoded by this gene is a ubiquitously expressed nuclear protein. It is found among several proteins that bind directly to retinoblastoma protein, which regulates cell proliferation. This protein complexes with transcriptional co-repressor CTBP. It is also associated with BRCA1 and is thought to modulate the functions of BRCA1 in transcriptional regulation, DNA repair, and/or cell cycle checkpoint control. It is suggested that this gene may itself be a tumor suppressor acting in the same pathway as BRCA1. Three transcript variants encoding two different isoforms have been found for this gene. More transcript variants exist, but their full-length natures have not been determined.

## Immunogen Information

**Gene ID**

5932

**Swiss Prot**

Q99708

**Immunogen**

Recombinant fusion protein containing a sequence corresponding to amino acids 1-300 of human RBBP8 (NP\_976036.1).

**Synonyms**

RBBP8;COM1;CTIP;JWDS;RIM;SAE2;SCKL2

## Contact

 | [www.abclonal.com](http://www.abclonal.com)

## Product Information

**Source**

Rabbit

**Isotype**

IgG

**Purification**

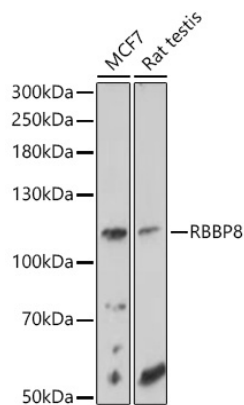
Affinity purification

**Storage**

Store at -20°C. Avoid freeze / thaw cycles.

Buffer: PBS with 0.02% sodium azide, 50% glycerol, pH7.3.

## Validation Data



Western blot analysis of extracts of various cell lines, using RBBP8 antibody (A10201) at 1:1000 dilution.

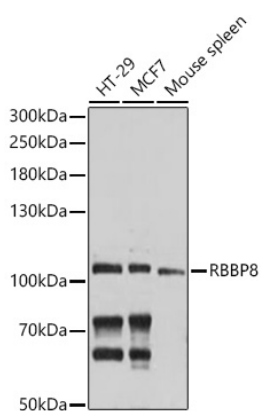
Secondary antibody: HRP Goat Anti-Rabbit IgG (H+L) (AS014) at 1:10000 dilution.

Lysates/proteins: 25ug per lane.

Blocking buffer: 3% nonfat dry milk in TBST.

Detection: ECL Basic Kit (RM00020).

Exposure time: 60s.



Western blot analysis of extracts of various cell lines, using RBBP8 antibody (A10201) at 1:1000 dilution.

Secondary antibody: HRP Goat Anti-Rabbit IgG (H+L) (AS014) at 1:10000 dilution.

Lysates/proteins: 25ug per lane.

Blocking buffer: 3% nonfat dry milk in TBST.

Detection: ECL Basic Kit (RM00020).

Exposure time: 10s.