

PDE4B Rabbit pAb

Catalog No.: A10196 **1 Publications**

Basic Information

Catalog No.

A10196

Observed MW

83kDa

Calculated MW

57kDa/64kDa/82kDa/83kDa

Category

Primary antibody

Applications

WB

Cross-Reactivity

Human, Mouse

Recommended Dilutions

WB 1:1000 - 1:3000

Background

This gene is a member of the type IV, cyclic AMP (cAMP)-specific, cyclic nucleotide phosphodiesterase (PDE) family. The encoded protein regulates the cellular concentrations of cyclic nucleotides and thereby play a role in signal transduction. Altered activity of this protein has been associated with schizophrenia and bipolar affective disorder. Alternative splicing and the use of alternative promoters results in multiple transcript variants encoding different isoforms.

Immunogen Information

Gene ID

5142

Swiss Prot

Q07343

Immunogen

Recombinant fusion protein containing a sequence corresponding to amino acids 1-130 of human PDE4B (NP_002591.2).

Synonyms

PDE4B;DPDE4;PDEIVB

Contact

 | www.abclonal.com

Product Information

Source

Rabbit

Isotype

IgG

Purification

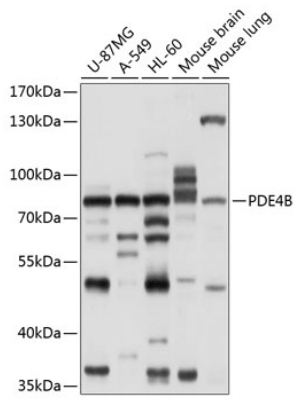
Affinity purification

Storage

Store at -20°C. Avoid freeze / thaw cycles.

Buffer: PBS with 0.02% sodium azide,50% glycerol,pH7.3.

Validation Data



Western blot analysis of extracts of various cell lines, using PDE4B antibody (A10196) at 1:1000 dilution.

Secondary antibody: HRP Goat Anti-Rabbit IgG (H+L) (AS014) at 1:10000 dilution.

Lysates/proteins: 25ug per lane.

Blocking buffer: 3% nonfat dry milk in TBST.

Detection: ECL Basic Kit (RM00020).

Exposure time: 1s.