

# IGFBP6 Rabbit pAb

Catalog No.: A10195

## Basic Information

---

### Catalog No.

A10195

### Observed MW

25kDa

### Calculated MW

25kDa

### Category

Primary antibody

### Applications

WB

### Cross-Reactivity

Human, Mouse

## Recommended Dilutions

---

**WB** 1:1000 - 1:3000

## Background

---

## Immunogen Information

---

### Gene ID

3489

### Swiss Prot

P24592

### Immunogen

Recombinant fusion protein containing a sequence corresponding to amino acids 28-240 of human IGFBP6 (NP\_002169.1).

### Synonyms

IGFBP6;IBP6

## Contact

---

 | [www.abclonal.com](http://www.abclonal.com)

## Product Information

---

### Source

Rabbit

### Isotype

IgG

### Purification

Affinity purification

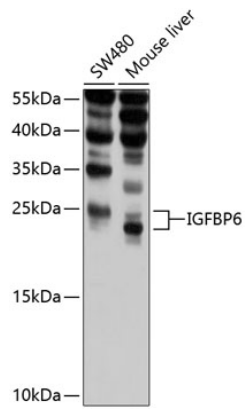
### Storage

Store at -20°C. Avoid freeze / thaw cycles.

Buffer: PBS with 0.02% sodium azide, 50% glycerol, pH 7.3.

## Validation Data

---



Western blot analysis of extracts of various cell lines, using IGFBP6 antibody (A10195) at 1:1000 dilution.

Secondary antibody: HRP Goat Anti-Rabbit IgG (H+L) (AS014) at 1:10000 dilution.

Lysates/proteins: 25ug per lane.

Blocking buffer: 3% nonfat dry milk in TBST.

Detection: ECL Basic Kit (RM00020).

Exposure time: 15s.