

IL36G Rabbit pAb

Catalog No.: A10165

Basic Information

Catalog No.

A10165

Observed MW

18kDa

Calculated MW

18kDa

Category

Primary antibody

Applications

WB

Cross-Reactivity

Mouse

Recommended Dilutions

WB 1:500 - 1:2000

Background

The protein encoded by this gene is a member of the interleukin 1 cytokine family. The activity of this cytokine is mediated by interleukin 1 receptor-like 2 (IL1RL2/IL1R-rp2), and is specifically inhibited by interleukin 1 family, member 5 (IL1F5/IL-1 delta). Interferon-gamma, tumor necrosis factor-alpha and interleukin 1, beta (IL1B) are reported to stimulate the expression of this cytokine in keratinocytes. The expression of this cytokine in keratinocytes can also be induced by a contact hypersensitivity reaction or herpes simplex virus infection. This gene and eight other interleukin 1 family genes form a cytokine gene cluster on chromosome 2. Two alternatively spliced transcript variants encoding different isoforms have been found for this gene.

Immunogen Information

Gene ID

215257

Swiss Prot

Immunogen

Recombinant fusion protein containing a sequence corresponding to amino acids 1-193 of mouse IL36G (NP_705731.2).

Synonyms

IL36G;IL-1F9;IL-1H1;IL-1RP2;IL1E;IL1F9;IL1H1;IL1RP2

Contact

 | www.abclonal.com

Product Information

Source

Rabbit

Isotype

IgG

Purification

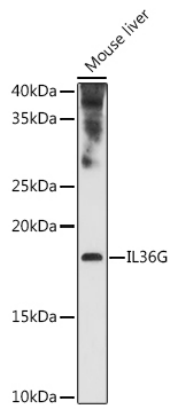
Affinity purification

Storage

Store at -20°C. Avoid freeze / thaw cycles.

Buffer: PBS with 0.02% sodium azide,50% glycerol,pH7.3.

Validation Data



Western blot analysis of extracts of various cell lines, using IL36G antibody (A10165) at 1:1000 dilution.

Secondary antibody: HRP Goat Anti-Rabbit IgG (H+L) (AS014) at 1:10000 dilution.

Lysates/proteins: 25ug per lane.

Blocking buffer: 3% nonfat dry milk in TBST.

Detection: ECL Enhanced Kit (RM00021).

Exposure time: 180s.