

ARMS2 Rabbit pAb

Catalog No.: A10161

Basic Information

Catalog No.

A10161

Observed MW

11kDa

Calculated MW

11kDa

Category

Primary antibody

Applications

WB

Cross-Reactivity

Mouse

Recommended Dilutions

WB 1:200 - 1:1000

Background

This gene encodes a protein that is thought to play a role in diseases in the elderly. Mutations in this gene have been associated with age-related macular degeneration.

Immunogen Information

Gene ID

387715

Swiss Prot

P0C7Q2

Immunogen

Recombinant fusion protein containing a sequence corresponding to amino acids 1-107 of human ARMS2 (NP_001093137.1).

Synonyms

ARMS2;ARMD8

Contact

 | www.abclonal.com

Product Information

Source

Rabbit

Isotype

IgG

Purification

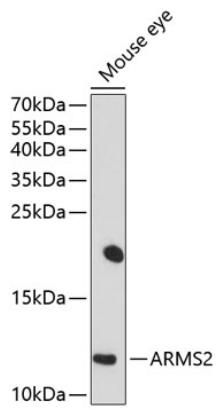
Affinity purification

Storage

Store at -20°C. Avoid freeze / thaw cycles.

Buffer: PBS with 0.02% sodium azide,50% glycerol,pH7.3.

Validation Data



Western blot analysis of extracts of mouse eye, using ARMS2 antibody (A10161) at 1:1000 dilution.
Secondary antibody: HRP Goat Anti-Rabbit IgG (H+L) (AS014) at 1:10000 dilution.
Lysates/proteins: 25ug per lane.
Blocking buffer: 3% nonfat dry milk in TBST.
Detection: ECL Basic Kit (RM00020).
Exposure time: 90s.