

# TAS1R3 Rabbit pAb

Catalog No.: A10157

## Basic Information

### Catalog No.

A10157

### Observed MW

93kDa

### Calculated MW

93kDa

### Category

Primary antibody

### Applications

WB

### Cross-Reactivity

Human, Mouse, Rat

## Recommended Dilutions

**WB** 1:1000 - 1:4000

## Background

The protein encoded by this gene is a G-protein coupled receptor involved in taste responses. The encoded protein can form a heterodimeric receptor with TAS1R1 to elicit the umami taste response, or it can bind with TAS1R2 to form a receptor for the sweet taste response.

## Immunogen Information

### Gene ID

83756

### Swiss Prot

Q7RTX0

### Immunogen

Recombinant fusion protein containing a sequence corresponding to amino acids 400-570 of human TAS1R3 (NP\_689414.1).

### Synonyms

TAS1R3;T1R3

## Contact

 | [www.abclonal.com](http://www.abclonal.com)

## Product Information

### Source

Rabbit

### Isotype

IgG

### Purification

Affinity purification

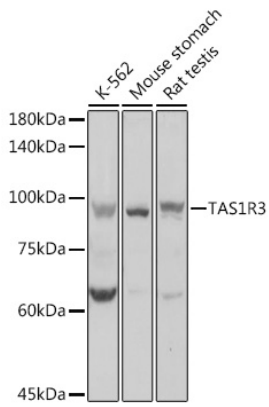
### Storage

Store at -20°C. Avoid freeze / thaw cycles.

Buffer: PBS with 0.02% sodium azide,50% glycerol,pH7.3.

## Validation Data

---



Western blot analysis of extracts of various cell lines, using TAS1R3 antibody (A10157) at 1:1000 dilution.

Secondary antibody: HRP Goat Anti-Rabbit IgG (H+L) (AS014) at 1:10000 dilution.

Lysates/proteins: 25ug per lane.

Blocking buffer: 3% nonfat dry milk in TBST.

Detection: ECL Basic Kit (RM00020).

Exposure time: 1s.