

SMG6 Rabbit pAb

Catalog No.: A10141 **1 Publications**

Basic Information

Catalog No.

A10141

Observed MW

210kDa

Calculated MW

37kDa/57kDa/160kDa

Category

Primary antibody

Applications

WB

Cross-Reactivity

Human, Rat

Recommended Dilutions

WB 1:500 - 1:2000

Background

This gene encodes a component of the telomerase ribonucleoprotein complex responsible for the replication and maintenance of chromosome ends. The encoded protein also plays a role in the nonsense-mediated mRNA decay (NMD) pathway, providing the endonuclease activity near the premature translation termination codon that is needed to initiate NMD. Alternatively spliced transcript variants encoding distinct protein isoforms have been described.

Immunogen Information

Gene ID

23293

Swiss Prot

Q86U58

Immunogen

Recombinant fusion protein containing a sequence corresponding to amino acids 1160-1419 of human SMG6 (NP_060045.4).

Synonyms

SMG6;C17orf31;EST1A;SMG-6;hSMG5/7a

Contact

 | www.abclonal.com

Product Information

Source

Rabbit

Isotype

IgG

Purification

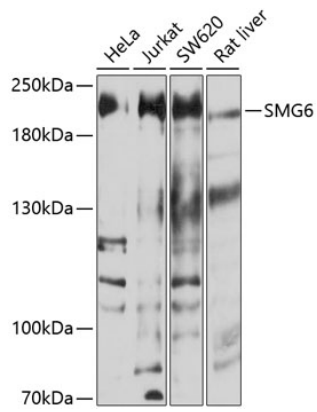
Affinity purification

Storage

Store at -20°C. Avoid freeze / thaw cycles.

Buffer: PBS with 0.02% sodium azide, 50% glycerol, pH7.3.

Validation Data



Western blot analysis of extracts of various cell lines, using SMG6 antibody (A10141) at 1:1000 dilution.

Secondary antibody: HRP Goat Anti-Rabbit IgG (H+L) (AS014) at 1:10000 dilution.

Lysates/proteins: 25ug per lane.

Blocking buffer: 3% nonfat dry milk in TBST.

Detection: ECL Basic Kit (RM00020).

Exposure time: 30s.