

SSSCA1 Rabbit pAb

Catalog No.: A10137

Basic Information

Catalog No.

A10137

Observed MW

21kDa

Calculated MW

21kDa

Category

Primary antibody

Applications

WB

Cross-Reactivity

Mouse

Recommended Dilutions

WB 1:500 - 1:2000

Background

This antigen is recognized by a subset of anti-centromere antibodies from patients with scleroderma and/or Sjogren's syndrome. Subcellular localization has not yet been established.

Immunogen Information

Gene ID

10534

Swiss Prot

O60232

Immunogen

Recombinant fusion protein containing a sequence corresponding to amino acids 1-199 of human SSSCA1 (NP_006387.1).

Synonyms

SSSCA1;p27

Contact

 | www.abclonal.com

Product Information

Source

Rabbit

Isotype

IgG

Purification

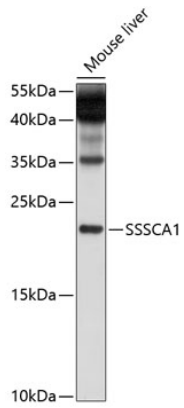
Affinity purification

Storage

Store at -20°C. Avoid freeze / thaw cycles.

Buffer: PBS with 0.02% sodium azide, 50% glycerol, pH7.3.

Validation Data



Western blot analysis of extracts of mouse liver, using SSSCA1 antibody (A10137) at 1:1000 dilution.
Secondary antibody: HRP Goat Anti-Rabbit IgG (H+L) (AS014) at 1:10000 dilution.
Lysates/proteins: 25ug per lane.
Blocking buffer: 3% nonfat dry milk in TBST.
Detection: ECL Basic Kit (RM00020).
Exposure time: 10s.