

ZP2 Rabbit pAb

Catalog No.: A10126

Basic Information

Catalog No.

A10126

Observed MW

68kDa

Calculated MW

81kDa/82kDa

Category

Primary antibody

Applications

WB, IF

Cross-Reactivity

Human, Mouse, Rat

Recommended Dilutions

WB	1:1000 - 1:4000
IF	1:50 - 1:200

Contact

 | www.abclonal.com

Background

The zona pellucida is an extracellular matrix that surrounds the oocyte and early embryo. It is composed of three glycoproteins with various functions during fertilization and preimplantation development. The glycosylated mature peptide is one of the structural components of the zona pellucida and functions in secondary binding and penetration of acrosome-reacted spermatozoa. Female mice lacking this gene do not form a stable zona matrix and are sterile. Alternative splicing results in multiple transcript variants.

Immunogen Information

Gene ID	Swiss Prot
7783	Q05996

Immunogen

Recombinant fusion protein containing a sequence corresponding to amino acids 651-745 of human ZP2 (NP_003451.1).

Synonyms

ZP2;ZPA;Zp-2

Product Information

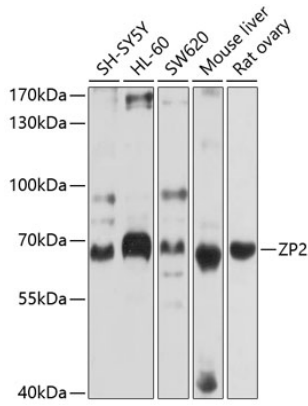
Source	Isotype	Purification
Rabbit	IgG	Affinity purification

Storage

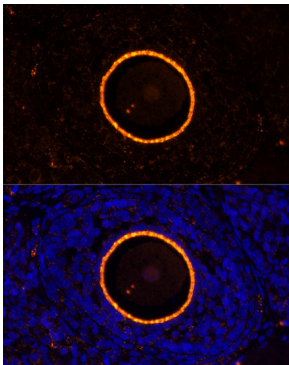
Store at -20°C. Avoid freeze / thaw cycles.

Buffer: PBS with 0.02% sodium azide,50% glycerol,pH7.3.

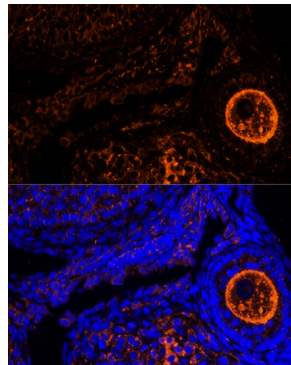
Validation Data



Western blot analysis of extracts of various cell lines, using ZP2 antibody (A10126) at 1:1000 dilution. Secondary antibody: HRP Goat Anti-Rabbit IgG (H+L) (AS014) at 1:10000 dilution. Lysates/proteins: 25ug per lane. Blocking buffer: 3% nonfat dry milk in TBST. Detection: ECL Basic Kit (RM00020). Exposure time: 10s.



Immunofluorescence analysis of rat oophoroma cells using ZP2 antibody (A10126) at dilution of 1:100. Blue: DAPI for nuclear staining.



Immunofluorescence analysis of mouse oophoroma cells using ZP2 antibody (A10126) at dilution of 1:100. Blue: DAPI for nuclear staining.