

NACA Rabbit pAb

Catalog No.: A10122

Basic Information

Catalog No.

A10122

Observed MW

37kDa

Calculated MW

23kDa/94kDa/205kDa

Category

Primary antibody

Applications

WB, IHC, IP

Cross-Reactivity

Human, Mouse, Rat

Recommended Dilutions

WB	1:500 - 1:2000
IHC	1:50 - 1:100
IP	1:50 - 1:100

Contact

 | www.abclonal.com

Background

This gene encodes a protein that associates with basic transcription factor 3 (BTF3) to form the nascent polypeptide-associated complex (NAC). This complex binds to nascent proteins that lack a signal peptide motif as they emerge from the ribosome, blocking interaction with the signal recognition particle (SRP) and preventing mistranslocation to the endoplasmic reticulum. This protein is an IgE autoantigen in atopic dermatitis patients. Alternative splicing results in multiple transcript variants, but the full length nature of some of these variants, including those encoding very large proteins, has not been determined. There are multiple pseudogenes of this gene on different chromosomes.

Immunogen Information

Gene ID	Swiss Prot
4666	Q13765

Immunogen

Recombinant fusion protein containing a sequence corresponding to amino acids 1-215 of human NACA (NP_001106673.1).

Synonyms

NACA;HSD48;NAC-alpha;NACA1;skNAC

Product Information

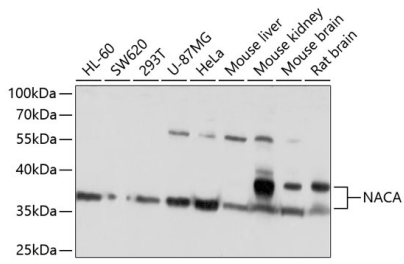
Source	Isotype	Purification
Rabbit	IgG	Affinity purification

Storage

Store at -20°C. Avoid freeze / thaw cycles.

Buffer: PBS with 0.02% sodium azide, 50% glycerol, pH7.3.

Validation Data



Western blot analysis of extracts of various cell lines, using NACA antibody (A10122) at 1:1000 dilution.

Secondary antibody: HRP Goat Anti-Rabbit IgG (H+L) (AS014) at 1:10000 dilution.

Lysates/proteins: 25ug per lane.

Blocking buffer: 3% nonfat dry milk in TBST.

Detection: ECL Basic Kit (RM00020).

Exposure time: 10s.