

# LAIR1 Rabbit pAb

**Catalog No.:** A10120

## Basic Information

**Catalog No.**

A10120

**Observed MW**

35kDa

**Calculated MW**

23kDa/29kDa/31kDa

**Category**

Primary antibody

**Applications**

WB

**Cross-Reactivity**

Human, Mouse, Rat

## Recommended Dilutions

**WB** 1:1000 - 1:4000

## Background

The protein encoded by this gene is an inhibitory receptor found on peripheral mononuclear cells, including natural killer cells, T cells, and B cells. Inhibitory receptors regulate the immune response to prevent lysis of cells recognized as self. The gene is a member of both the immunoglobulin superfamily and the leukocyte-associated inhibitory receptor family. The gene maps to a region of 19q13.4 called the leukocyte receptor cluster, which contains at least 29 genes encoding leukocyte-expressed receptors of the immunoglobulin superfamily. The encoded protein has been identified as an anchor for tyrosine phosphatase SHP-1, and may induce cell death in myeloid leukemias. Alternative splicing results in multiple transcript variants.

## Immunogen Information

**Gene ID**

3903

**Swiss Prot**

Q6GTX8

**Immunogen**

Recombinant protein of human LAIR1

**Synonyms**

LAIR1;CD305;LAIR-1

## Contact

 | [www.abclonal.com](http://www.abclonal.com)

## Product Information

**Source**

Rabbit

**Isotype**

IgG

**Purification**

Affinity purification

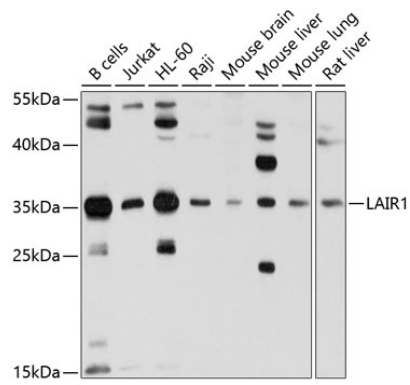
**Storage**

Store at -20°C. Avoid freeze / thaw cycles.

Buffer: PBS with 0.02% sodium azide,50% glycerol,pH7.3.

## Validation Data

---



Western blot analysis of extracts of various cell lines, using LAIR1 antibody (A10120) at 1:1000 dilution.

Secondary antibody: HRP Goat Anti-Rabbit IgG (H+L) (AS014) at 1:10000 dilution.

Lysates/proteins: 25ug per lane.

Blocking buffer: 3% nonfat dry milk in TBST.

Detection: ECL Basic Kit (RM00020).

Exposure time: 15s.