

KRT3 Rabbit pAb

Catalog No.: A10118

Basic Information

Catalog No.

A10118

Observed MW

65kDa

Calculated MW

64kDa

Category

Primary antibody

Applications

WB, IF

Cross-Reactivity

Human, Mouse

Recommended Dilutions

WB	1:500 - 1:2000
IF	1:50 - 1:200

Contact

 | www.abclonal.com

Background

The protein encoded by this gene is a member of the keratin gene family. The type II cytokeratins consist of basic or neutral proteins which are arranged in pairs of heterotypic keratin chains coexpressed during differentiation of simple and stratified epithelial tissues. This type II cytokeratin is specifically expressed in the corneal epithelium with family member KRT12 and mutations in these genes have been associated with Meesmann's Corneal Dystrophy. The type II cytokeratins are clustered in a region of chromosome 12q12-q13.

Immunogen Information

Gene ID	Swiss Prot
3850	P12035

Immunogen

Recombinant fusion protein containing a sequence corresponding to amino acids 230-390 of human KRT3 (NP_476429.2).

Synonyms

KRT3;CK3;K3;keratin 3

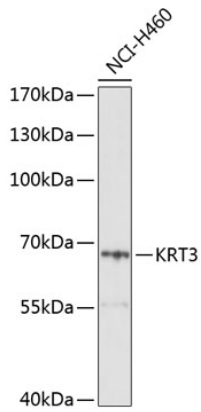
Product Information

Source	Isotype	Purification
Rabbit	IgG	Affinity purification

Storage

Store at -20°C. Avoid freeze / thaw cycles.
Buffer: PBS with 0.02% sodium azide,50% glycerol,pH7.3.

Validation Data



Western blot analysis of extracts of H460 cells, using KRT3 Antibody (A10118) at 1:1000 dilution.
Secondary antibody: HRP Goat Anti-Rabbit IgG (H+L) (AS014) at 1:10000 dilution.
Lysates/proteins: 25ug per lane.
Blocking buffer: 3% nonfat dry milk in TBST.
Detection: ECL Basic Kit (RM00020).
Exposure time: 10s.