

# GABRR2 Rabbit pAb

Catalog No.: A10111

## Basic Information

### Catalog No.

A10111

### Observed MW

65kDa

### Calculated MW

54kDa/56kDa

### Category

Primary antibody

### Applications

WB

### Cross-Reactivity

Human, Mouse

## Recommended Dilutions

WB 1:500 - 1:2000

## Background

Gamma-aminobutyric acid (GABA) is the major inhibitory neurotransmitter in the mammalian brain where it acts at GABA receptors, which are ligand-gated chloride channels. The protein encoded by this gene is a member of the rho subunit family and is a component of the GABA type A receptor complex. This gene exists on chromosome 6q next to the gene encoding the rho 1 subunit of the GABA type A receptor, in a region thought to be associated with susceptibility for psychiatric disorders and epilepsy. Polymorphisms in this gene may also be associated with alcohol dependence, and general cognitive ability.

## Immunogen Information

### Gene ID

2570

### Swiss Prot

P28476

### Immunogen

Recombinant fusion protein containing a sequence corresponding to amino acids 350-450 of human GABRR2 (NP\_002034.3).

### Synonyms

GABRR2

## Contact

 | [www.abclonal.com](http://www.abclonal.com)

## Product Information

### Source

Rabbit

### Isotype

IgG

### Purification

Affinity purification

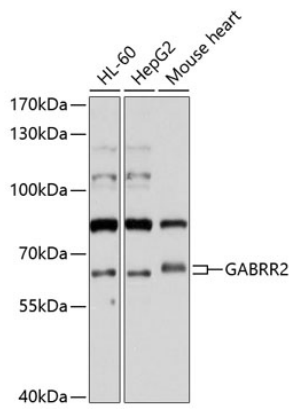
### Storage

Store at -20°C. Avoid freeze / thaw cycles.

Buffer: PBS with 0.02% sodium azide, 50% glycerol, pH7.3.

## Validation Data

---



Western blot analysis of extracts of various cell lines, using GABRR2 antibody (A10111) at 1:1000 dilution.

Secondary antibody: HRP Goat Anti-Rabbit IgG (H+L) (AS014) at 1:10000 dilution.

Lysates/proteins: 25ug per lane.

Blocking buffer: 3% nonfat dry milk in TBST.

Detection: ECL Basic Kit (RM00020).

Exposure time: 30s.