

ATP4B Rabbit pAb

Catalog No.: A10106

Basic Information

Catalog No.

A10106

Observed MW

35kDa

Calculated MW

33kDa

Category

Primary antibody

Applications

WB, IHC

Cross-Reactivity

Human, Mouse, Rat

Recommended Dilutions

WB	1:500 - 1:2000
IHC	1:50 - 1:200

Contact

 | www.abclonal.com

Background

The protein encoded by this gene belongs to a family of P-type cation-transporting ATPases. The gastric H⁺, K⁺-ATPase is a heterodimer consisting of a high molecular weight catalytic alpha subunit and a smaller but heavily glycosylated beta subunit. This enzyme is a proton pump that catalyzes the hydrolysis of ATP coupled with the exchange of H⁽⁺⁾ and K⁽⁺⁾ ions across the plasma membrane. It is also responsible for gastric acid secretion. This gene encodes the beta subunit of the gastric H⁺, K⁺-ATPase.

Immunogen Information

Gene ID	Swiss Prot
496	P51164

Immunogen

Recombinant fusion protein containing a sequence corresponding to amino acids 62-291 of human ATP4B (NP_000696.1).

Synonyms

ATP4B;ATP6B

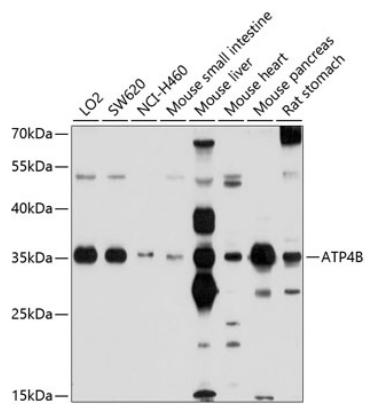
Product Information

Source	Isotype	Purification
Rabbit	IgG	Affinity purification

Storage

Store at -20°C. Avoid freeze / thaw cycles.
Buffer: PBS with 0.02% sodium azide,50% glycerol,pH7.3.

Validation Data



Western blot analysis of extracts of various cell lines, using ATP4B antibody (A10106) at 1:1000 dilution.

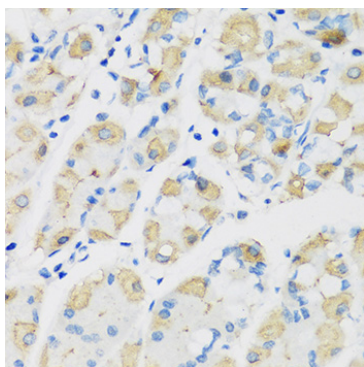
Secondary antibody: HRP Goat Anti-Rabbit IgG (H+L) (AS014) at 1:10000 dilution.

Lysates/proteins: 25ug per lane.

Blocking buffer: 3% nonfat dry milk in TBST.

Detection: ECL Basic Kit (RM00020).

Exposure time: 30s.



Immunohistochemistry of paraffin-embedded human stomach using ATP4B antibody (A10106) at dilution of 1:100 (40x lens).