

# MSMB Rabbit pAb

Catalog No.: A10092

## Basic Information

### Catalog No.

A10092

### Observed MW

16kDa

### Calculated MW

8kDa/12kDa

### Category

Primary antibody

### Applications

WB, IHC

### Cross-Reactivity

Human, Mouse

## Recommended Dilutions

|            |                |
|------------|----------------|
| <b>WB</b>  | 1:500 - 1:2000 |
| <b>IHC</b> | 1:50 - 1:200   |

## Contact

 | [www.abclonal.com](http://www.abclonal.com)

## Background

The protein encoded by this gene is a member of the immunoglobulin binding factor family. It is synthesized by the epithelial cells of the prostate gland and secreted into the seminal plasma. This protein has inhibin-like activity. It may have a role as an autocrine paracrine factor in uterine, breast and other female reproductive tissues. The expression of the encoded protein is found to be decreased in prostate cancer. Two alternatively spliced transcript variants encoding different isoforms are described for this gene. The use of alternate polyadenylation sites has been found for this gene.

## Immunogen Information

|                |                   |
|----------------|-------------------|
| <b>Gene ID</b> | <b>Swiss Prot</b> |
| 4477           | P08118            |

### Immunogen

Recombinant fusion protein containing a sequence corresponding to amino acids 30-114 of human MSMB (NP\_002434.1).

### Synonyms

MSMB;HPC13;IGBF;MSP;MSPB;PN44;PRPS;PSP;PSP-94;PSP57;PSP94

## Product Information

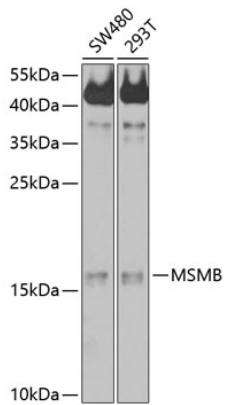
|               |                |                       |
|---------------|----------------|-----------------------|
| <b>Source</b> | <b>Isotype</b> | <b>Purification</b>   |
| Rabbit        | IgG            | Affinity purification |

### Storage

Store at -20°C. Avoid freeze / thaw cycles.

Buffer: PBS with 0.02% sodium azide,50% glycerol,pH7.3.

## Validation Data



Western blot analysis of extracts of various cell lines, using MSMB antibody (A10092) at 1:1000 dilution.

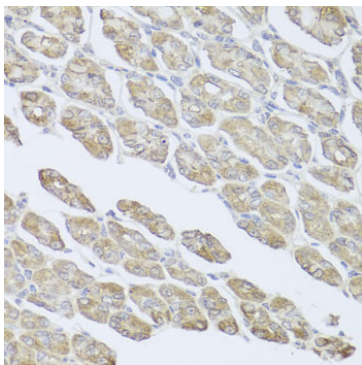
Secondary antibody: HRP Goat Anti-Rabbit IgG (H+L) (AS014) at 1:10000 dilution.

Lysates/proteins: 25ug per lane.

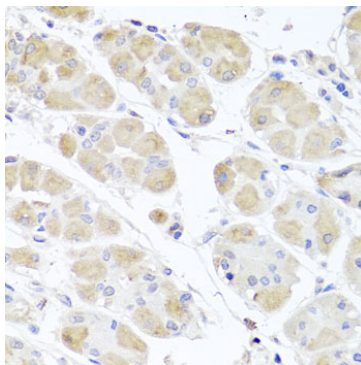
Blocking buffer: 3% nonfat dry milk in TBST.

Detection: ECL Basic Kit (RM00020).

Exposure time: 60s.



Immunohistochemistry of paraffin-embedded mouse stomach using MSMB antibody (A10092) at dilution of 1:100 (40x lens).



Immunohistochemistry of paraffin-embedded human stomach using MSMB antibody (A10092) at dilution of 1:100 (40x lens).