

# PAX8 Rabbit pAb

Catalog No.: A1009

## Basic Information

### Catalog No.

A1009

### Observed MW

48kDa

### Calculated MW

31kDa/34kDa/41kDa/43kDa/48kDa

### Category

Primary antibody

### Applications

WB, IF

### Cross-Reactivity

Human, Rat

## Recommended Dilutions

<b>WB</b>	1:500 - 1:2000
<b>IF</b>	1:50 - 1:200

## Contact

 | [www.abclonal.com](http://www.abclonal.com)

## Background

This gene encodes a member of the paired box (PAX) family of transcription factors. Members of this gene family typically encode proteins that contain a paired box domain, an octapeptide, and a paired-type homeodomain. This nuclear protein is involved in thyroid follicular cell development and expression of thyroid-specific genes. Mutations in this gene have been associated with thyroid dysgenesis, thyroid follicular carcinomas and atypical follicular thyroid adenomas. Alternatively spliced transcript variants encoding different isoforms have been described.

## Immunogen Information

<b>Gene ID</b>	<b>Swiss Prot</b>
7849	Q06710

### Immunogen

Recombinant fusion protein containing a sequence corresponding to amino acids 1-212 of human PAX8 (NP\_003457.1).

### Synonyms

PAX8

## Product Information

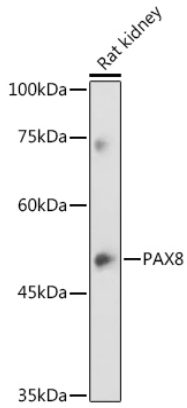
<b>Source</b>	<b>Isotype</b>	<b>Purification</b>
Rabbit	IgG	Affinity purification

### Storage

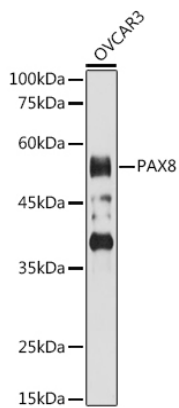
Store at -20°C. Avoid freeze / thaw cycles.

Buffer: PBS with 0.02% sodium azide, 50% glycerol, pH7.3.

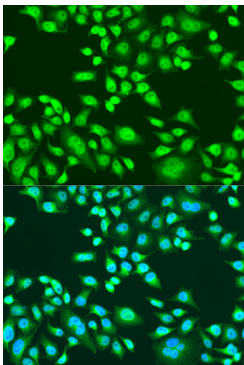
## Validation Data



Western blot analysis of extracts of Rat kidney, using PAX8 antibody (A1009) at 1:1000 dilution.  
Secondary antibody: HRP Goat Anti-Rabbit IgG (H+L) (AS014) at 1:10000 dilution.  
Lysates/proteins: 25ug per lane.  
Blocking buffer: 3% nonfat dry milk in TBST.  
Detection: ECL Basic Kit (RM00020).  
Exposure time: 180s.



Western blot analysis of extracts of OVCAR3 cells, using PAX8 antibody (A1009) at 1:1000 dilution.  
Secondary antibody: HRP Goat Anti-Rabbit IgG (H+L) (AS014) at 1:10000 dilution.  
Lysates/proteins: 25ug per lane.  
Blocking buffer: 3% nonfat dry milk in TBST.  
Detection: ECL Basic Kit (RM00020).  
Exposure time: 10s.



Immunofluorescence analysis of U2OS cells using PAX8 antibody (A1009) at dilution of 1:100. Blue: DAPI for nuclear staining.