

PCDH15 Rabbit pAb

Catalog No.: A10086

Basic Information

Catalog No.

A10086

Observed MW

100kDa

Calculated MW

92kDa/106kDa/185kDa/197kDa/216kDa

Category

Primary antibody

Applications

WB, IHC

Cross-Reactivity

Human, Mouse, Rat

Recommended Dilutions

WB	1:500 - 1:2000
IHC	1:100 - 1:200

Contact

 | www.abclonal.com

Background

This gene is a member of the cadherin superfamily. Family members encode integral membrane proteins that mediate calcium-dependent cell-cell adhesion. It plays an essential role in maintenance of normal retinal and cochlear function. Mutations in this gene result in hearing loss and Usher Syndrome Type IF (USH1F). Extensive alternative splicing resulting in multiple isoforms has been observed in the mouse ortholog. Similar alternatively spliced transcripts are inferred to occur in human, and additional variants are likely to occur.

Immunogen Information

Gene ID	Swiss Prot
65217	Q96QU1

Immunogen

Recombinant fusion protein containing a sequence corresponding to amino acids 160-400 of human PCDH15 (NP_001136235.1).

Synonyms

PCDH15;CDHR15;DFNB23;USH1F

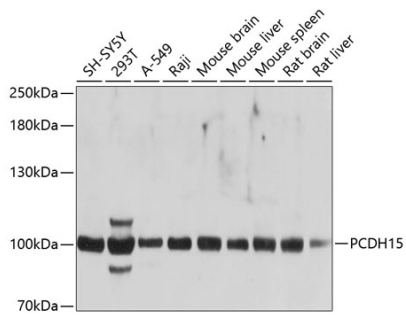
Product Information

Source	Isotype	Purification
Rabbit	IgG	Affinity purification

Storage

Store at -20°C. Avoid freeze / thaw cycles.
Buffer: PBS with 0.02% sodium azide, 50% glycerol, pH7.3.

Validation Data



Western blot analysis of extracts of various cell lines, using PCDH15 antibody (A10086) at 1:1000 dilution.

Secondary antibody: HRP Goat Anti-Rabbit IgG (H+L) (AS014) at 1:10000 dilution.

Lysates/proteins: 25ug per lane.

Blocking buffer: 3% nonfat dry milk in TBST.

Detection: ECL Basic Kit (RM00020).

Exposure time: 5s.