

# MEP1B Rabbit pAb

**Catalog No.:** A10085

## Basic Information

**Catalog No.**

A10085

**Observed MW**

105kDa

**Calculated MW**

79kDa

**Category**

Primary antibody

**Applications**

WB

**Cross-Reactivity**

Mouse

## Recommended Dilutions

**WB** 1:500 - 1:1000

## Background

Meprens are multidomain zinc metalloproteases that are highly expressed in mammalian kidney and intestinal brush border membranes, and in leukocytes and certain cancer cells. They are involved in the hydrolysis of a variety of peptide and protein substrates, and have been implicated in cancer and intestinal inflammation. Mature meprens are oligomers of evolutionarily related, but separately encoded alpha and/or beta subunits. Homooligomers of alpha subunit are secreted, whereas, oligomers containing the beta subunit are plasma membrane-bound. This gene encodes the beta subunit. Targeted disruption of this gene in mice affects embryonic viability, renal gene expression profiles, and distribution of the membrane-associated alpha subunit in kidney and intestine.

## Immunogen Information

**Gene ID**

4225

**Swiss Prot**

Q16820

**Immunogen**

Recombinant fusion protein containing a sequence corresponding to amino acids 480-652 of human MEP1B (NP\_005916.2).

**Synonyms**

MEP1B

## Contact

 | [www.abclonal.com](http://www.abclonal.com)

## Product Information

**Source**

Rabbit

**Isotype**

IgG

**Purification**

Affinity purification

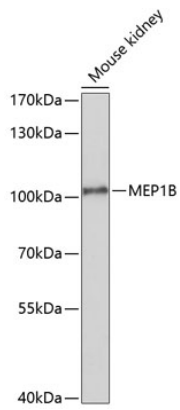
**Storage**

Store at -20°C. Avoid freeze / thaw cycles.

Buffer: PBS with 0.02% sodium azide, 50% glycerol, pH7.3.

## Validation Data

---



Western blot analysis of extracts of mouse kidney, using MEP1B antibody (A10085) at 1:1000 dilution. Secondary antibody: HRP Goat Anti-Rabbit IgG (H+L) (AS014) at 1:10000 dilution. Lysates/proteins: 25ug per lane. Blocking buffer: 3% nonfat dry milk in TBST. Detection: ECL Enhanced Kit (RM00021). Exposure time: 90s.