

IFNLR1 Rabbit pAb

Catalog No.: A10082

Basic Information

Catalog No.

A10082

Observed MW

53kDa

Calculated MW

23kDa/27kDa/54kDa/57kDa

Category

Primary antibody

Applications

WB

Cross-Reactivity

Human, Mouse, Rat

Recommended Dilutions

WB 1:1000 - 1:4000

Background

The protein encoded by this gene belongs to the class II cytokine receptor family. This protein forms a receptor complex with interleukine 10 receptor, beta (IL10RB). The receptor complex has been shown to interact with three closely related cytokines, including interleukin 28A (IL28A), interleukin 28B (IL28B), and interleukin 29 (IL29). The expression of all three cytokines can be induced by viral infection. The cells overexpressing this protein have been found to have enhanced responses to IL28A and IL29, but decreased response to IL28B. Three alternatively spliced transcript variants encoding distinct isoforms have been reported.

Immunogen Information

Gene ID

163702

Swiss Prot

Q8IU57

Immunogen

Recombinant fusion protein containing a sequence corresponding to amino acids 21-228 of human IFNLR1 (NP_734464.1).

Synonyms

IFNLR1;CRF2/12;IFNLR;IL-28R1;IL28RA;LICR2

Contact

 | www.abclonal.com

Product Information

Source

Rabbit

Isotype

IgG

Purification

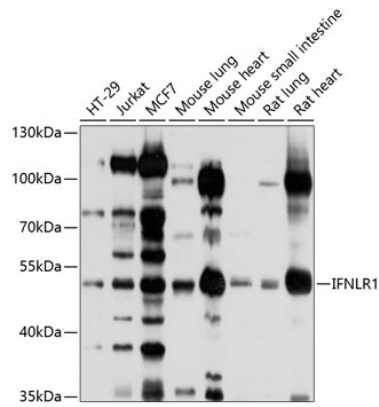
Affinity purification

Storage

Store at -20°C. Avoid freeze / thaw cycles.

Buffer: PBS with 0.02% sodium azide,50% glycerol,pH7.3.

Validation Data



Western blot analysis of extracts of various cell lines, using IFNLR1 antibody (A10082) at 1:1000 dilution.

Secondary antibody: HRP Goat Anti-Rabbit IgG (H+L) (AS014) at 1:10000 dilution.

Lysates/proteins: 25ug per lane.

Blocking buffer: 3% nonfat dry milk in TBST.

Detection: ECL Basic Kit (RM00020).

Exposure time: 10s.