

# GRIN3B Rabbit pAb

Catalog No.: A10081

## Basic Information

### Catalog No.

A10081

### Observed MW

135kDa

### Calculated MW

112kDa

### Category

Primary antibody

### Applications

WB

### Cross-Reactivity

Rat

## Recommended Dilutions

WB 1:500 - 1:1000

## Background

The protein encoded by this gene is a subunit of an N-methyl-D-aspartate (NMDA) receptor. The encoded protein is found primarily in motor neurons, where it forms a heterotetramer with GRIN1 to create an excitatory glycine receptor. Variations in this gene have been proposed to be linked to schizophrenia.

## Immunogen Information

### Gene ID

116444

### Swiss Prot

O60391

### Immunogen

Recombinant fusion protein containing a sequence corresponding to amino acids 180-410 of human GRIN3B (NP\_619635.1).

### Synonyms

GRIN3B;GluN3B;NR3B;NMDA 3B

## Contact

 | [www.abclonal.com](http://www.abclonal.com)

## Product Information

### Source

Rabbit

### Isotype

IgG

### Purification

Affinity purification

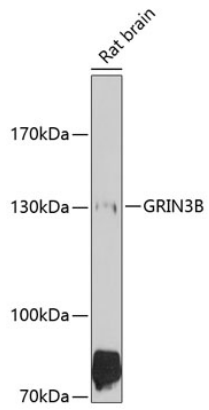
### Storage

Store at -20°C. Avoid freeze / thaw cycles.

Buffer: PBS with 0.02% sodium azide, 50% glycerol, pH7.3.

## Validation Data

---



Western blot analysis of extracts of rat brain, using GRIN3B antibody (A10081) at 1:1000 dilution.  
Secondary antibody: HRP Goat Anti-Rabbit IgG (H+L) (AS014) at 1:10000 dilution.  
Lysates/proteins: 25ug per lane.  
Blocking buffer: 3% nonfat dry milk in TBST.  
Detection: ECL Basic Kit (RM00020).  
Exposure time: 90s.