

PLXNB2 Rabbit pAb

Catalog No.: A10069

Basic Information

Catalog No.

A10069

Observed MW

80kDa

Calculated MW

205kDa

Category

Primary antibody

Applications

WB

Cross-Reactivity

Human, Mouse, Rat

Recommended Dilutions

WB 1:500 - 1:2000

Background

Immunogen Information

Gene ID

23654

Swiss Prot

O15031

Immunogen

Recombinant fusion protein containing a sequence corresponding to amino acids 1080-1200 of human PLXNB2 (NP_036533.2).

Synonyms

PLXNB2;MM1;Nbla00445;PLEXB2;dj402G11.3;plexin-B2

Contact

 | www.abclonal.com

Product Information

Source

Rabbit

Isotype

IgG

Purification

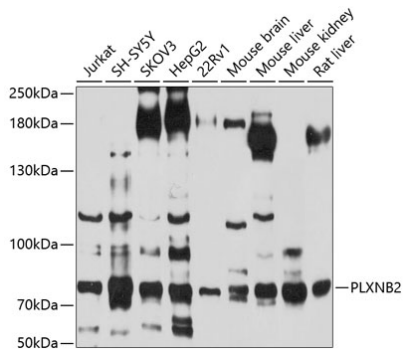
Affinity purification

Storage

Store at -20°C. Avoid freeze / thaw cycles.

Buffer: PBS with 0.02% sodium azide, 50% glycerol, pH7.3.

Validation Data



Western blot analysis of extracts of various cell lines, using PLXNB2 antibody (A10069) at 1:1000 dilution.

Secondary antibody: HRP Goat Anti-Rabbit IgG (H+L) (AS014) at 1:10000 dilution.

Lysates/proteins: 25ug per lane.

Blocking buffer: 3% nonfat dry milk in TBST.

Detection: ECL Basic Kit (RM00020).

Exposure time: 90s.