

PLA2R1 Rabbit pAb

Catalog No.: A10068

Basic Information

Catalog No.

A10068

Observed MW

169kDa

Calculated MW

152kDa/168kDa

Category

Primary antibody

Applications

WB, IHC

Cross-Reactivity

Human, Mouse, Rat

Recommended Dilutions

| | |
|------------|----------------|
| WB | 1:500 - 1:2000 |
| IHC | 1:50 - 1:200 |

Background

This gene represents a phospholipase A2 receptor. The encoded protein likely exists as both a transmembrane form and a soluble form. The transmembrane receptor may play a role in clearance of phospholipase A2, thereby inhibiting its action. Polymorphisms at this locus have been associated with susceptibility to idiopathic membranous nephropathy. Alternatively spliced transcript variants encoding different isoforms have been identified.

Immunogen Information

| | |
|----------------|-------------------|
| Gene ID | Swiss Prot |
| 22925 | Q13018 |

Immunogen

Recombinant fusion protein containing a sequence corresponding to amino acids 870-1130 of human PLA2R1 (NP_031392.3).

Synonyms

CLEC13C;PLA2-R;PLA2G1R;PLA2IR;PLA2R;PLA2R1

Contact

 | www.abclonal.com

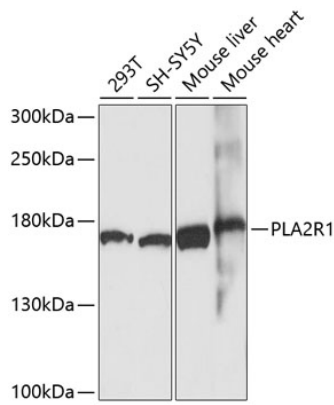
Product Information

| | | |
|---------------|----------------|-----------------------|
| Source | Isotype | Purification |
| Rabbit | IgG | Affinity purification |

Storage

Store at -20°C. Avoid freeze / thaw cycles.
Buffer: PBS with 0.02% sodium azide,50% glycerol,pH7.3.

Validation Data



Western blot analysis of extracts of various cell lines, using PLA2R1 antibody (A10068) at 1:1000 dilution.

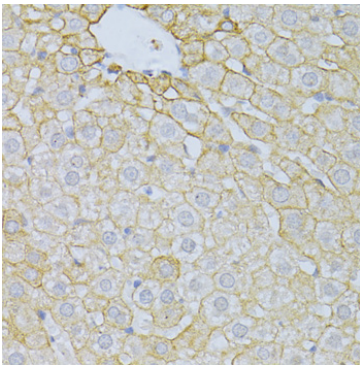
Secondary antibody: HRP Goat Anti-Rabbit IgG (H+L) (AS014) at 1:10000 dilution.

Lysates/proteins: 25ug per lane.

Blocking buffer: 3% nonfat dry milk in TBST.

Detection: ECL Basic Kit (RM00020).

Exposure time: 90s.



Immunohistochemistry of paraffin-embedded rat liver using PLA2R1 antibody (A10068) at dilution of 1:100 (40x lens).