

# STX8 Rabbit pAb

Catalog No.: A10050

## Basic Information

---

**Catalog No.**

A10050

**Observed MW**

27kDa

**Calculated MW**

26kDa

**Category**

Primary antibody

**Applications**

WB

**Cross-Reactivity**

Human, Mouse

## Recommended Dilutions

---

**WB** 1:500 - 1:2000

## Background

---

The gene is a member of the syntaxin family. The encoded protein is involved in protein trafficking from early to late endosomes via vesicle fusion and exocytosis. A related pseudogene has been identified on chromosome 12. Alternative splicing results in multiple transcript variants.

## Immunogen Information

---

**Gene ID**

9482

**Swiss Prot**

Q9UNK0

**Immunogen**

Recombinant fusion protein containing a sequence corresponding to amino acids 1-215 of human STX8 (NP\_004844.1).

**Synonyms**

STX8; CARB

## Contact

---

 | [www.abclonal.com](http://www.abclonal.com)

## Product Information

---

**Source**

Rabbit

**Isotype**

IgG

**Purification**

Affinity purification

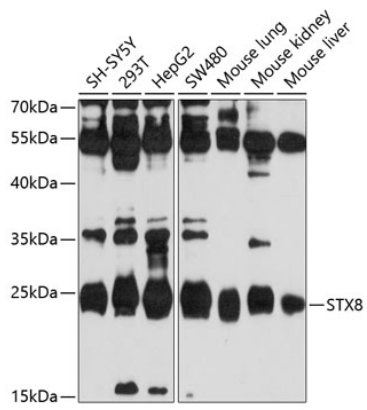
**Storage**

Store at -20°C. Avoid freeze / thaw cycles.

Buffer: PBS with 0.02% sodium azide, 50% glycerol, pH7.3.

## Validation Data

---



Western blot analysis of extracts of various cell lines, using STX8 antibody (A10050) at 1:1000 dilution.

Secondary antibody: HRP Goat Anti-Rabbit IgG (H+L) (AS014) at 1:10000 dilution.

Lysates/proteins: 25ug per lane.

Blocking buffer: 3% nonfat dry milk in TBST.

Detection: ECL Basic Kit (RM00020).

Exposure time: 90s.