

MPHOSPH10 Rabbit pAb

Catalog No.: A10041

Basic Information

Catalog No.

A10041

Observed MW

78kDa

Calculated MW

78kDa

Category

Primary antibody

Applications

WB

Cross-Reactivity

Human, Mouse

Recommended Dilutions

WB 1:500 - 1:1000

Background

This gene encodes a protein that is phosphorylated during mitosis. The protein localizes to the nucleolus during interphase and to the chromosomes during M phase. The protein associates with the U3 small nucleolar ribonucleoprotein 60-80S complexes and may be involved in pre-rRNA processing.

Immunogen Information

Gene ID

10199

Swiss Prot

O00566

Immunogen

Recombinant fusion protein containing a sequence corresponding to amino acids 432-681 of human MPHOSPH10 (NP_005782.1).

Synonyms

MPHOSPH10;CT90;MPP10;MPP10P;PPP1R106

Contact

 | www.abclonal.com

Product Information

Source

Rabbit

Isotype

IgG

Purification

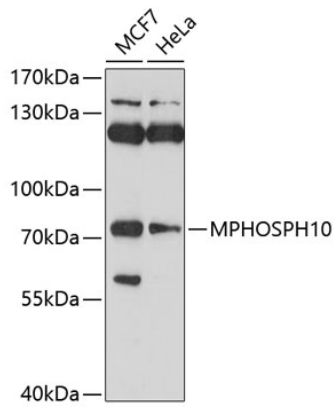
Affinity purification

Storage

Store at -20°C. Avoid freeze / thaw cycles.

Buffer: PBS with 0.02% sodium azide, 50% glycerol, pH7.3.

Validation Data



Western blot analysis of extracts of various cell lines, using MPHOSPH10 antibody (A10041) at 1:1000 dilution.

Secondary antibody: HRP Goat Anti-Rabbit IgG (H+L) (AS014) at 1:10000 dilution.

Lysates/proteins: 25ug per lane.

Blocking buffer: 3% nonfat dry milk in TBST.

Detection: ECL Basic Kit (RM00020).

Exposure time: 90s.