

SUCLA2 Rabbit pAb

Catalog No.: A10040

Basic Information

Catalog No.

A10040

Observed MW

50kDa

Calculated MW

48kDa/50kDa

Category

Primary antibody

Applications

WB

Cross-Reactivity

Human, Mouse, Rat

Recommended Dilutions

WB 1:500 - 1:1000

Background

Succinyl-CoA synthetase (SCS) is a mitochondrial matrix enzyme that acts as a heterodimer, being composed of an invariant alpha subunit and a substrate-specific beta subunit. The protein encoded by this gene is an ATP-specific SCS beta subunit that dimerizes with the SCS alpha subunit to form SCS-A, an essential component of the tricarboxylic acid cycle. SCS-A hydrolyzes ATP to convert succinate to succinyl-CoA. Defects in this gene are a cause of myopathic mitochondrial DNA depletion syndrome. A pseudogene of this gene has been found on chromosome 6.

Immunogen Information

Gene ID

8803

Swiss Prot

Q9P2R7

Immunogen

Recombinant fusion protein containing a sequence corresponding to amino acids 1-180 of human SUCLA2 (NP_003841.1).

Synonyms

SUCLA2;A-BETA;A-SCS;MTDPS5;SCS-betaA

Contact

 | www.abclonal.com

Product Information

Source

Rabbit

Isotype

IgG

Purification

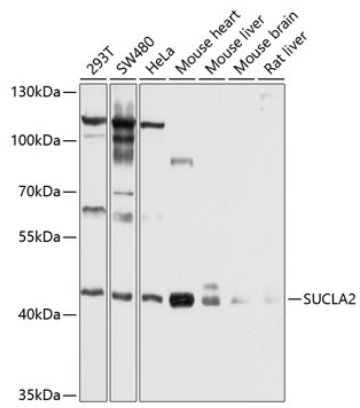
Affinity purification

Storage

Store at -20°C. Avoid freeze / thaw cycles.

Buffer: PBS with 0.02% sodium azide,50% glycerol,pH7.3.

Validation Data



Western blot analysis of extracts of various cell lines, using SUCLA2 antibody (A10040) at 1:1000 dilution.

Secondary antibody: HRP Goat Anti-Rabbit IgG (H+L) (AS014) at 1:10000 dilution.

Lysates/proteins: 25ug per lane.

Blocking buffer: 3% nonfat dry milk in TBST.

Detection: ECL Basic Kit (RM00020).

Exposure time: 1s.