

INF2 Rabbit pAb

Catalog No.: A10038

Basic Information

Catalog No.

A10038

Observed MW

180kDa

Calculated MW

25kDa/134kDa/135kDa

Category

Primary antibody

Applications

WB

Cross-Reactivity

Human

Recommended Dilutions

WB 1:500 - 1:1000

Background

This gene represents a member of the formin family of proteins. It is considered a diaphanous formin due to the presence of a diaphanous inhibitory domain located at the N-terminus of the encoded protein. Studies of a similar mouse protein indicate that the protein encoded by this locus may function in polymerization and depolymerization of actin filaments. Mutations at this locus have been associated with focal segmental glomerulosclerosis 5.

Immunogen Information

Gene ID

64423

Swiss Prot

Q27J81

Immunogen

Recombinant fusion protein containing a sequence corresponding to amino acids 1-190 of human INF2 (NP_116103.1).

Synonyms

INF2;C14orf151;C14orf173;CMTDIE;FSG55;pp9484

Contact

 | www.abclonal.com

Product Information

Source

Rabbit

Isotype

IgG

Purification

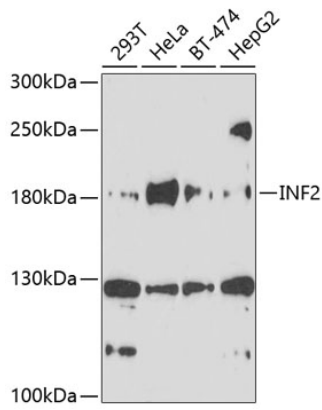
Affinity purification

Storage

Store at -20°C. Avoid freeze / thaw cycles.

Buffer: PBS with 0.02% sodium azide,50% glycerol,pH7.3.

Validation Data



Western blot analysis of extracts of various cell lines, using INF2 antibody (A10038) at 1:1000 dilution.
Secondary antibody: HRP Goat Anti-Rabbit IgG (H+L) (AS014) at 1:10000 dilution.
Lysates/proteins: 25ug per lane.
Blocking buffer: 3% nonfat dry milk in TBST.
Detection: ECL Basic Kit (RM00020).
Exposure time: 90s.