

RGS13 Rabbit pAb

Catalog No.: A10035

Basic Information

Catalog No.

A10035

Observed MW

30kDa

Calculated MW

19kDa

Category

Primary antibody

Applications

WB, IHC

Cross-Reactivity

Human, Mouse, Rat

Recommended Dilutions

WB	1:500 - 1:2000
IHC	1:100 - 1:200

Contact

 | www.abclonal.com

Background

The protein encoded by this gene is a member of the regulator of G protein signaling (RGS) family. RGS family members share similarity with *S. cerevisiae* SST2 and *C. elegans* egl-10 proteins, which contain a characteristic conserved RGS domain. RGS proteins accelerate GTPase activity of G protein alpha-subunits, thereby driving G protein into their inactive GDP-bound form, thus negatively regulating G protein signaling. RGS proteins have been implicated in the fine tuning of a variety of cellular events in response to G protein-coupled receptor activation. The biological function of this gene, however, is unknown. Two transcript variants encoding the same isoform exist.

Immunogen Information

Gene ID	Swiss Prot
6003	O14921

Immunogen

Recombinant fusion protein containing a sequence corresponding to amino acids 1-159 of human RGS13 (NP_002918.1).

Synonyms

RGS13

Product Information

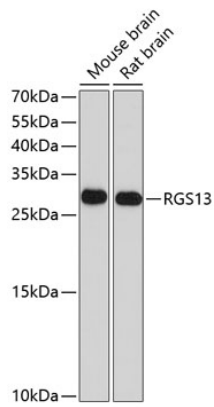
Source	Isotype	Purification
Rabbit	IgG	Affinity purification

Storage

Store at -20°C. Avoid freeze / thaw cycles.

Buffer: PBS with 0.02% sodium azide, 50% glycerol, pH7.3.

Validation Data



Western blot analysis of extracts of various cell lines, using RGS13 antibody (A10035) at 1:1000 dilution.

Secondary antibody: HRP Goat Anti-Rabbit IgG (H+L) (AS014) at 1:10000 dilution.

Lysates/proteins: 25ug per lane.

Blocking buffer: 3% nonfat dry milk in TBST.

Detection: ECL Basic Kit (RM00020).

Exposure time: 90s.