

RBP1 Rabbit pAb

Catalog No.: A10029

Basic Information

Catalog No.

A10029

Observed MW

16KDa

Calculated MW

15kDa/17kDa

Category

Primary antibody

Applications

WB, IF

Cross-Reactivity

Human, Mouse, Rat

Recommended Dilutions

WB	1:500 - 1:1000
IF	1:50 - 1:200

Contact

 | www.abclonal.com

Background

This gene encodes the carrier protein involved in the transport of retinol (vitamin A alcohol) from the liver storage site to peripheral tissue. Vitamin A is a fat-soluble vitamin necessary for growth, reproduction, differentiation of epithelial tissues, and vision. Multiple transcript variants encoding different isoforms have been found for this gene.

Immunogen Information

Gene ID	Swiss Prot
5947	P09455

Immunogen

Recombinant fusion protein containing a sequence corresponding to amino acids 63-197 of human RBP1 (NP_002890.2).

Synonyms

RBP1; CRABP-I; CRBP; CRBP1; CRBPI; RBPC

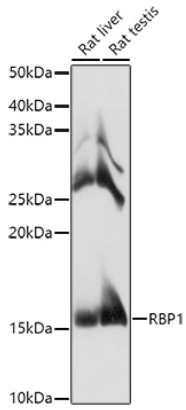
Product Information

Source	Isotype	Purification
Rabbit	IgG	Affinity purification

Storage

Store at -20°C. Avoid freeze / thaw cycles.
Buffer: PBS with 0.02% sodium azide, 50% glycerol, pH 7.3.

Validation Data



Western blot analysis of extracts of various cell lines, using RBP1 antibody (A10029) at 1:1000 dilution.

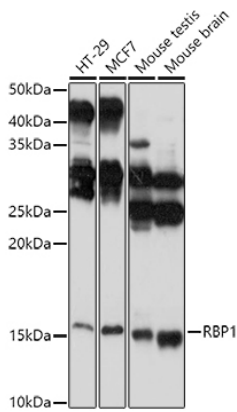
Secondary antibody: HRP Goat Anti-Rabbit IgG (H+L) (AS014) at 1:10000 dilution.

Lysates/proteins: 25ug per lane.

Blocking buffer: 3% nonfat dry milk in TBST.

Detection: ECL Basic Kit (RM00020).

Exposure time: 3s.



Western blot analysis of extracts of various cell lines, using RBP1 antibody (A10029) at 1:1000 dilution.

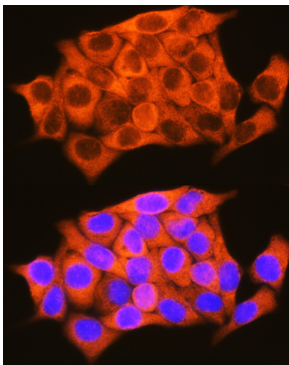
Secondary antibody: HRP Goat Anti-Rabbit IgG (H+L) (AS014) at 1:10000 dilution.

Lysates/proteins: 25ug per lane.

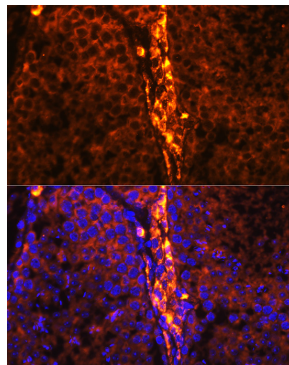
Blocking buffer: 3% nonfat dry milk in TBST.

Detection: ECL Basic Kit (RM00020).

Exposure time: 30s.



Immunofluorescence analysis of HeLa cells using RBP1 Rabbit pAb (A10029) at dilution of 1:100 (40x lens). Blue: DAPI for nuclear staining.



Immunofluorescence analysis of mouse testis using RBP1 Rabbit pAb (A10029) at dilution of 1:100 (40x lens). Blue: DAPI for nuclear staining.