

FGF7/KGF Rabbit pAb

Catalog No.: A10028

Basic Information

Catalog No.

A10028

Observed MW

23kDa

Calculated MW

11kDa/22kDa

Category

Primary antibody

Applications

WB

Cross-Reactivity

Human

Recommended Dilutions

WB 1:500 - 1:1000

Background

The protein encoded by this gene is a member of the fibroblast growth factor (FGF) family. FGF family members possess broad mitogenic and cell survival activities, and are involved in a variety of biological processes, including embryonic development, cell growth, morphogenesis, tissue repair, tumor growth and invasion. This protein is a potent epithelial cell-specific growth factor, whose mitogenic activity is predominantly exhibited in keratinocytes but not in fibroblasts and endothelial cells. Studies of mouse and rat homologs of this gene implicated roles in morphogenesis of epithelium, reepithelialization of wounds, hair development and early lung organogenesis.

Immunogen Information

Gene ID

2252

Swiss Prot

P21781

Immunogen

Recombinant fusion protein containing a sequence corresponding to amino acids 32-95 of human FGF7/KGF/KGF (NP_002000.1).

Synonyms

FGF7;HBGF-7;KGF

Contact

 | www.abclonal.com

Product Information

Source

Rabbit

Isotype

IgG

Purification

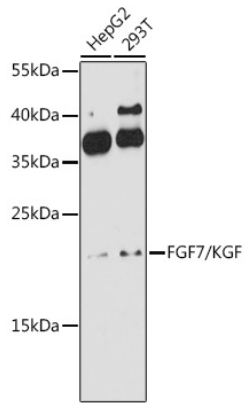
Affinity purification

Storage

Store at -20°C. Avoid freeze / thaw cycles.

Buffer: PBS with 0.02% sodium azide, 50% glycerol, pH7.3.

Validation Data



Western blot analysis of extracts of various cell lines, using FGF7/KGF/KGF antibody (A10028) at 1:1000 dilution.

Secondary antibody: HRP Goat Anti-Rabbit IgG (H+L) (AS014) at 1:10000 dilution.

Lysates/proteins: 25ug per lane.

Blocking buffer: 3% nonfat dry milk in TBST.

Detection: ECL Enhanced Kit (RM00021).

Exposure time: 90s.