

# EFEMP2 Rabbit pAb

Catalog No.: A10018

## Basic Information

---

**Catalog No.**

A10018

**Observed MW**

55kDa

**Calculated MW**

49kDa

**Category**

Primary antibody

**Applications**

WB

**Cross-Reactivity**

Human

## Recommended Dilutions

---

**WB** 1:500 - 1:1000

## Background

---

A large number of extracellular matrix proteins have been found to contain variations of the epidermal growth factor (EGF) domain and have been implicated in functions as diverse as blood coagulation, activation of complement and determination of cell fate during development. The protein encoded by this gene contains four EGF2 domains and six calcium-binding EGF2 domains. This gene is necessary for elastic fiber formation and connective tissue development. Defects in this gene are cause of an autosomal recessive cutis laxa syndrome. Alternatively spliced transcript variants have been identified for this gene.

## Immunogen Information

---

**Gene ID**

30008

**Swiss Prot**

O95967

**Immunogen**

Recombinant fusion protein containing a sequence corresponding to amino acids 26-250 of human EFEMP2 (NP\_058634.4).

**Synonyms**

EFEMP2;ARCL1B;FBLN4;MBP1;UPH1

## Contact

---

 | [www.abclonal.com](http://www.abclonal.com)

## Product Information

---

**Source**

Rabbit

**Isotype**

IgG

**Purification**

Affinity purification

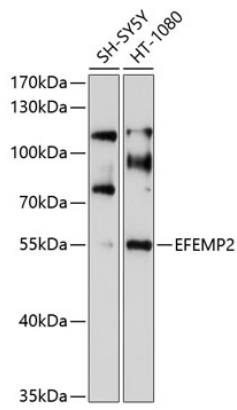
**Storage**

Store at -20°C. Avoid freeze / thaw cycles.

Buffer: PBS with 0.02% sodium azide,50% glycerol,pH7.3.

## Validation Data

---



Western blot analysis of extracts of various cell lines, using EFEMP2 antibody (A10018) at 1:1000 dilution.

Secondary antibody: HRP Goat Anti-Rabbit IgG (H+L) (AS014) at 1:10000 dilution.

Lysates/proteins: 25ug per lane.

Blocking buffer: 3% nonfat dry milk in TBST.

Detection: ECL Enhanced Kit (RM00021).

Exposure time: 90s.