

GABRB3 Rabbit pAb

Catalog No.: A10015 **2 Publications**

Basic Information

Catalog No.

A10015

Observed MW

65kDa

Calculated MW

45kDa/46kDa/54kDa

Category

Primary antibody

Applications

WB

Cross-Reactivity

Human

Recommended Dilutions

WB 1:500 - 1:1000

Background

This gene encodes a member of the ligand-gated ionic channel family. The encoded protein is one the subunits of a multi-subunit chloride channel that serves as the receptor for gamma-aminobutyric acid, a major inhibitory neurotransmitter of the mammalian nervous system. This gene is located on the long arm of chromosome 15 in a cluster with two other genes encoding related subunits of the family. This gene may be associated with the pathogenesis of several disorders including Angelman syndrome, Prader-Willi syndrome, nonsyndromic orofacial clefts, epilepsy and autism. Alternatively spliced transcript variants encoding distinct isoforms have been described.

Immunogen Information

Gene ID

2562

Swiss Prot

P28472

Immunogen

Recombinant fusion protein containing a sequence corresponding to amino acids 330-460 of human GABRB3 (NP_000805.1).

Synonyms

GABRB3;ECA5;EIEE43

Contact

 | www.abclonal.com

Product Information

Source

Rabbit

Isotype

IgG

Purification

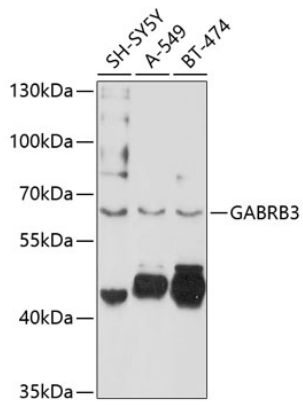
Affinity purification

Storage

Store at -20°C. Avoid freeze / thaw cycles.

Buffer: PBS with 0.02% sodium azide,50% glycerol,pH7.3.

Validation Data



Western blot analysis of extracts of various cell lines, using GABRB3 antibody (A10015) at 1:1000 dilution.

Secondary antibody: HRP Goat Anti-Rabbit IgG (H+L) (AS014) at 1:10000 dilution.

Lysates/proteins: 25ug per lane.

Blocking buffer: 3% nonfat dry milk in TBST.

Detection: ECL Basic Kit (RM00020).

Exposure time: 60s.