

CACNG1 Rabbit pAb

Catalog No.: A10014

Basic Information

Catalog No.

A10014

Observed MW

23kDa

Calculated MW

25kDa

Category

Primary antibody

Applications

WB

Cross-Reactivity

Mouse, Rat

Recommended Dilutions

WB 1:1000 - 1:4000

Background

Voltage-dependent calcium channels are composed of five subunits. The protein encoded by this gene represents one of these subunits, gamma, and is one of two known gamma subunit proteins. This particular gamma subunit is part of skeletal muscle 1,4-dihydropyridine-sensitive calcium channels and is an integral membrane protein that plays a role in excitation-contraction coupling. This gene is part of a functionally diverse eight-member protein subfamily of the PMP-22/EMP/MP20 family and is located in a cluster with two family members that function as transmembrane AMPA receptor regulatory proteins (TARPs).

Immunogen Information

Gene ID

786

Swiss Prot

Q06432

Immunogen

Recombinant fusion protein containing a sequence corresponding to amino acids 30-110 of human CACNG1 (NP_000718.1).

Synonyms

CACNG1;CACNLG

Contact

 | www.abclonal.com

Product Information

Source

Rabbit

Isotype

IgG

Purification

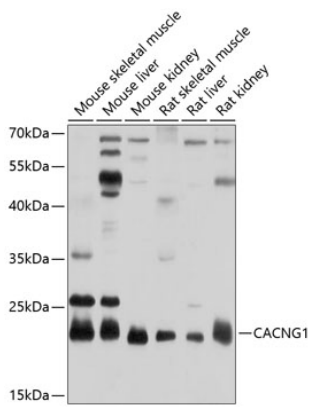
Affinity purification

Storage

Store at -20°C. Avoid freeze / thaw cycles.

Buffer: PBS with 0.02% sodium azide, 50% glycerol, pH7.3.

Validation Data



Western blot analysis of extracts of various cell lines, using CACNG1 antibody (A10014) at 1:1000 dilution.

Secondary antibody: HRP Goat Anti-Rabbit IgG (H+L) (AS014) at 1:10000 dilution.

Lysates/proteins: 25ug per lane.

Blocking buffer: 3% nonfat dry milk in TBST.

Detection: ECL Basic Kit (RM00020).

Exposure time: 10s.