

KLF6 Rabbit pAb

Catalog No.: A10011

Basic Information

Catalog No.

A10011

Observed MW

45kDa

Calculated MW

26kDa/30kDa/31kDa

Category

Primary antibody

Applications

WB, IHC, IF

Cross-Reactivity

Human, Mouse

Recommended Dilutions

WB	1:500 - 1:2000
IHC	1:50 - 1:100
IF	1:50 - 1:100

Contact

 | www.abclonal.com

Background

This gene encodes a member of the Kruppel-like family of transcription factors. The zinc finger protein is a transcriptional activator, and functions as a tumor suppressor. Multiple transcript variants encoding different isoforms have been found for this gene, some of which are implicated in carcinogenesis.

Immunogen Information

Gene ID	Swiss Prot
1316	Q99612

Immunogen

Recombinant fusion protein containing a sequence corresponding to amino acids 40-200 of human KLF6 (NP_001291.3).

Synonyms

KLF6;BCD1;CBA1;COPEB;CPBP;GBF;PAC1;ST12;ZF9

Product Information

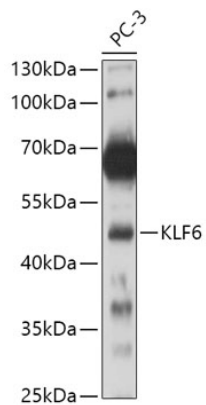
Source	Isotype	Purification
Rabbit	IgG	Affinity purification

Storage

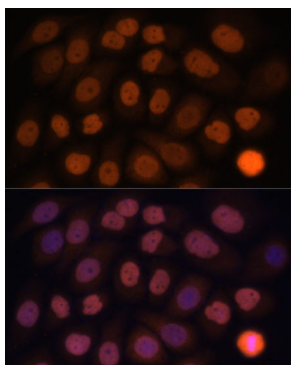
Store at -20°C. Avoid freeze / thaw cycles.

Buffer: PBS with 0.02% sodium azide, 50% glycerol, pH7.3.

Validation Data



Western blot analysis of extracts of PC-3 cells, using KLF6 antibody (A10011) at 1:500 dilution.
Secondary antibody: HRP Goat Anti-Rabbit IgG (H+L) (AS014) at 1:10000 dilution.
Lysates/proteins: 25ug per lane.
Blocking buffer: 3% nonfat dry milk in TBST.
Detection: ECL Basic Kit (RM00020).
Exposure time: 60s.



Immunofluorescence analysis of HeLa cells using KLF6 antibody (A10011) at dilution of 1:100. Blue: DAPI for nuclear staining.